

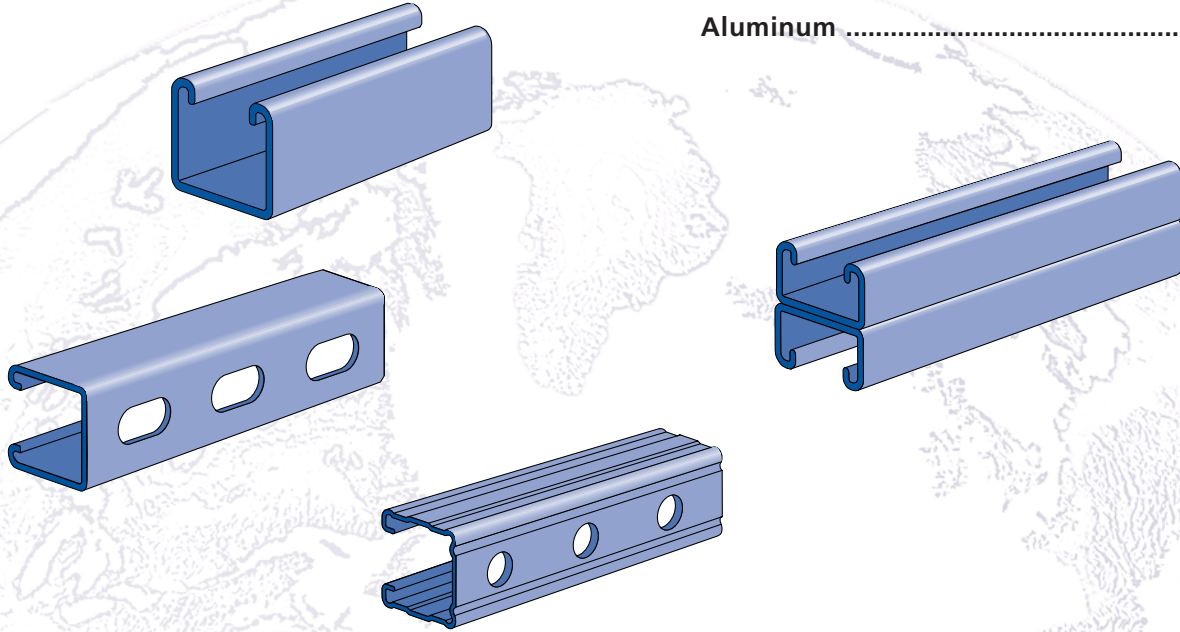


UNISTRUT

SPECIAL METALS

Stainless Steel 273-275

Aluminum 276-278



MATERIAL

Stainless Steel

Channels: ASTM A 240 (Type 304)

Sintered nuts: ASTM B783 (Type 316N2-33)

Fittings:

ASTM A240 (Type 304) or ASTM A276 (Type 304)

Type 316 stainless also available for most products.
Contact factory for specific material availability.

Aluminum

Channels (Extruded): ASTM B221 (Type 6063-T6)

Fittings: ASTM B209 (Type 1100F or Type 5052-H32)

Nuts: ASTM B221 (Type 6063-T5)

LOAD DATA (BEAM & COLUMN)

To determine maximum allowable beam and column loading for channels in this section, multiply the load data in the appropriate mild steel channel sections of this catalog by the following factors:

CHANNEL MATERIAL	BEAM LOAD % FACTOR	COLUMN LOAD % FACTOR
EXTRUDED ALUMINUM	33.0%	33.0%
STAINLESS STEEL	100.0%	100.0%

LOAD DATA (SLIP & PULL OUT)

Extruded Aluminum

To determine nut slip resistance, multiply load data for appropriate nut by 75%. To determine nut pull-out load, multiply load data for appropriate nut by 50%.

Stainless Steel

For design assistance, consult Unistrut customer engineering.

PRODUCT AVAILABILITY

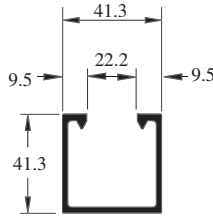
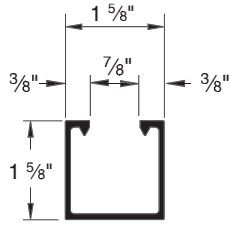
Most fittings and channels shown in this catalog, are available in aluminum or stainless steel. Consult factory for ordering information.


DIMENSIONS

Imperial dimensions are illustrated in inches. Metric dimensions are shown in parenthesis or as noted. Unless noted, all metric dimensions are in millimeters and rounded to one decimal place.

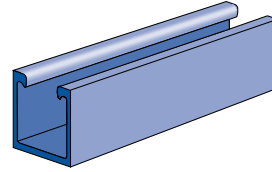


P1000 EA

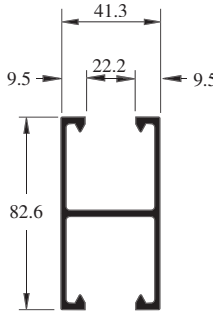
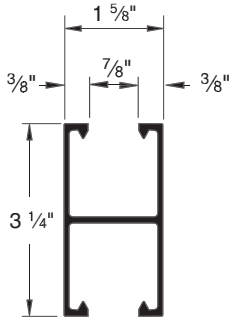


 When used with P3184 EA.

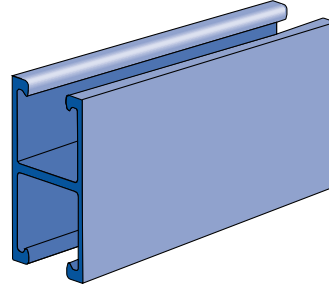
Wt/100 Ft: 76 Lbs (113 kg/100 m)
Aluminum Type 6063-T6
Nominal Thickness .109" (2.8mm)



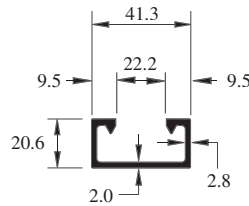
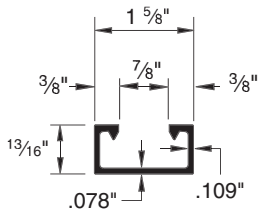
P1001 EA



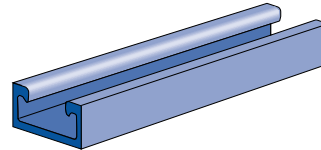
Wt/100 Ft: 134 Lbs (199 kg/100 m)
Aluminum Type 6063-T6
12 Gauge Nominal Thickness .109" (2.8mm)



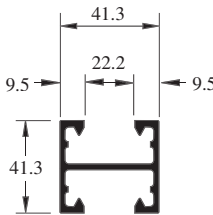
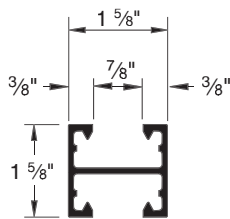
P4000 EA



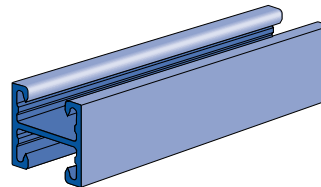
Wt/100 Ft: 45 Lbs (67 kg/100 m)
Aluminum Type 6063-T6
Nominal Thickness .078" (2.0mm)



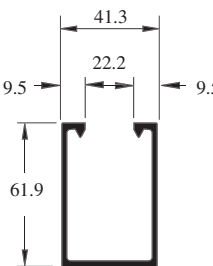
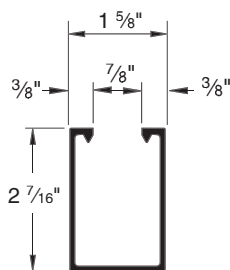
P4001 EA



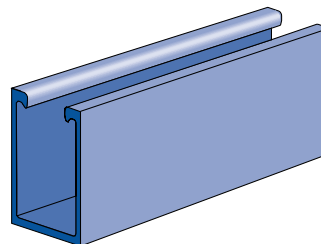
Wt/100 Ft: 66 Lbs (98 kg/100 m)
Aluminum Type 6063-T6
Nominal Thickness .078" (2.0mm)



P5500 EA

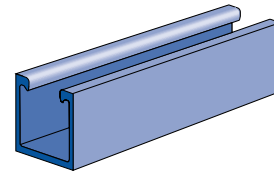
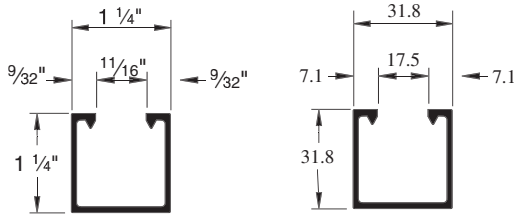


Wt/100 Ft: 97 Lbs (144 kg/100 m)
Aluminum Type 6063-T6
Nominal Thickness .109" (2.8mm)



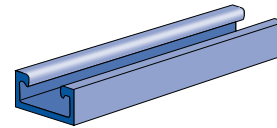
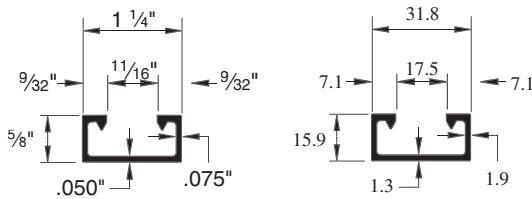
A1000 EA

Wt/100 Ft: 40 Lbs (60 kg/100 m)
 Aluminum Type 6063-T6
 Nominal Thickness .075" (1.9mm)



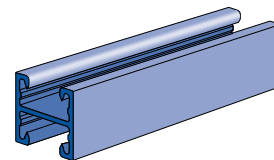
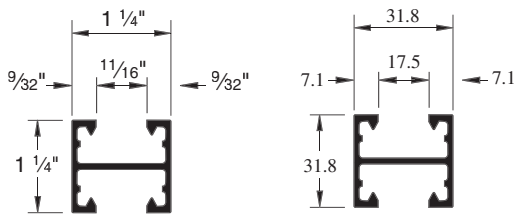
A4000 EA

Wt/100 Ft: 25 Lbs (37 kg/100 m)
 Aluminum Type 6063-T6
 12 Gauge Nominal Thickness .050" (1.3mm)
 Standard Length 16 Ft.



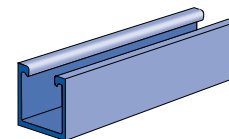
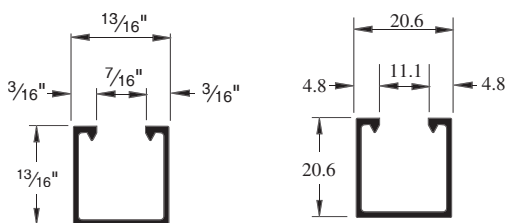
A4001 EA

Wt/100 Ft: 40 Lbs (60 kg/100 m)
 Aluminum Type 6063-T6
 Nominal Thickness .078" (2.0mm)
 Standard Length 16 Ft.



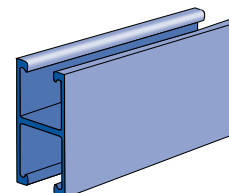
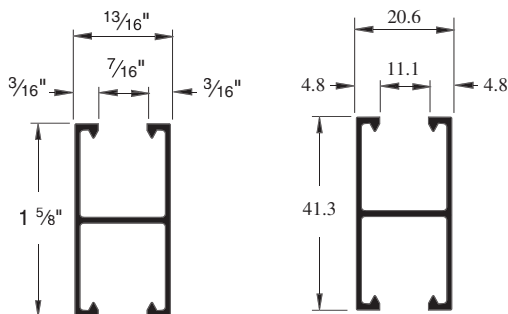
P6000 EA

Wt/100 Ft: 12 Lbs (18 kg/100 m)
 Aluminum Type 6063-T6
 Nominal Thickness .040" (1.0mm)
 Standard Length 16 Ft.



P6001 EA

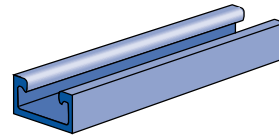
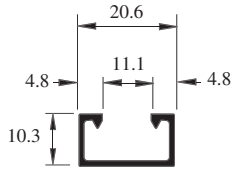
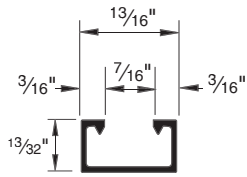
Wt/100 Ft: 20 Lbs (30 kg/100 m)
 Aluminum Type 6063-T6
 Nominal Thickness .040" (1.0mm)
 Standard Length 16 Ft.





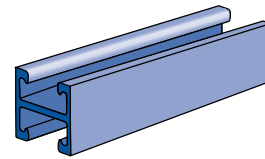
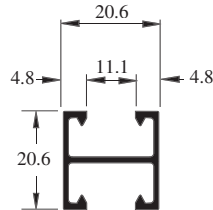
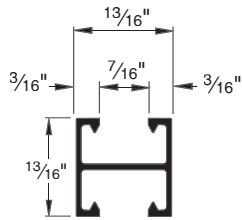
P7000 EA

Wt/100 Ft: 9 Lbs (13 kg/100 m)
 Aluminum Type 6063-T6
 Nominal Thickness .040" (1.0mm)
 Standard Length 10 Ft.



P7001 EA

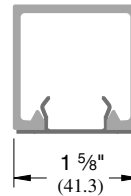
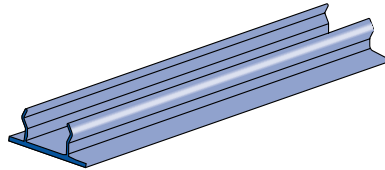
Wt/100 Ft: 17 Lbs (25 kg/100 m)
 Aluminum Type 6063-T6
 12 Gauge Nominal Thickness .040" (1.0mm)
 Standard Length 10 Ft



P3184 EA

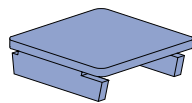
Closure Strip

Wt/100 Ft: 21 Lbs (31 kg/100 m)
 Aluminum Type 6063-T6
 Standard Length 10 Ft



P1280 EA, P4280 EA, P5580 EA

End Caps



Part Number	Use With Channel	Wt/100 Ft Lbs(kg/m)
P1280 EA	P1000 EA	3.5 1.6
P4280 EA	P4000 EA	1.5 0.7
P5500 EA	P5500 EA	4.9 2.2

1 5/8" Channel
 Telestrut System
 Nuts & Hardware
 General Fittings
 Pipe/Conduit Supports
 Electrical Fittings
 Concrete Inserts
 1 1/4" Framing System
 1 3/16" Framing System
 Fiberglass System
 Special Metals
 PrimeAngle System
 Product Index