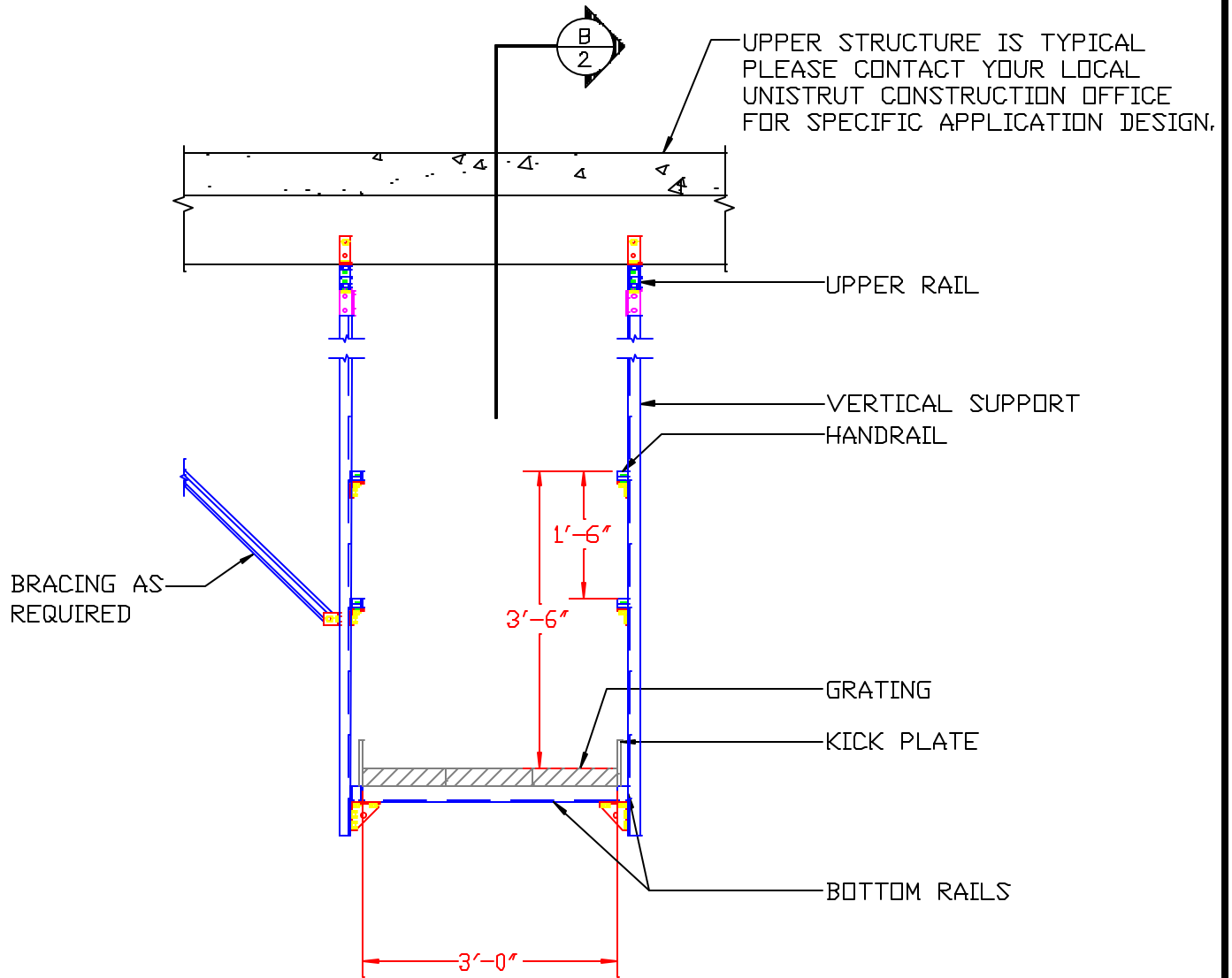


**GENERAL NOTES**

1. THIS UNISTRUT CATWALK SYSTEM IS DESIGNED TO SUPPORT A MAXIMUM UNIFORM LOAD OF \_\_\_ PSF. \*
2. AREA DIRECTLY ABOVE THE VERTICAL SUPPORT TO BE FREE AND CLEAR OF ALL OBSTRUCTIONS.
3. EXISTING STRUCTURE TO BE CHECKED BY OTHERS.
4. ALL CHANNEL & FITTINGS TO HAVE STANDARD UNISTRUT "PERMA-GREEN" FINISH AND ALL HARDWARE TO BE ELECTRO-GALVANIZED.

\* DESIGN LOAD VARIES BASED ON MAXIMUM SPANS - PLEASE CONTACT YOUR LOCAL UNISTRUT OFFICE FOR SPECIFIC LOADING DESIGN.



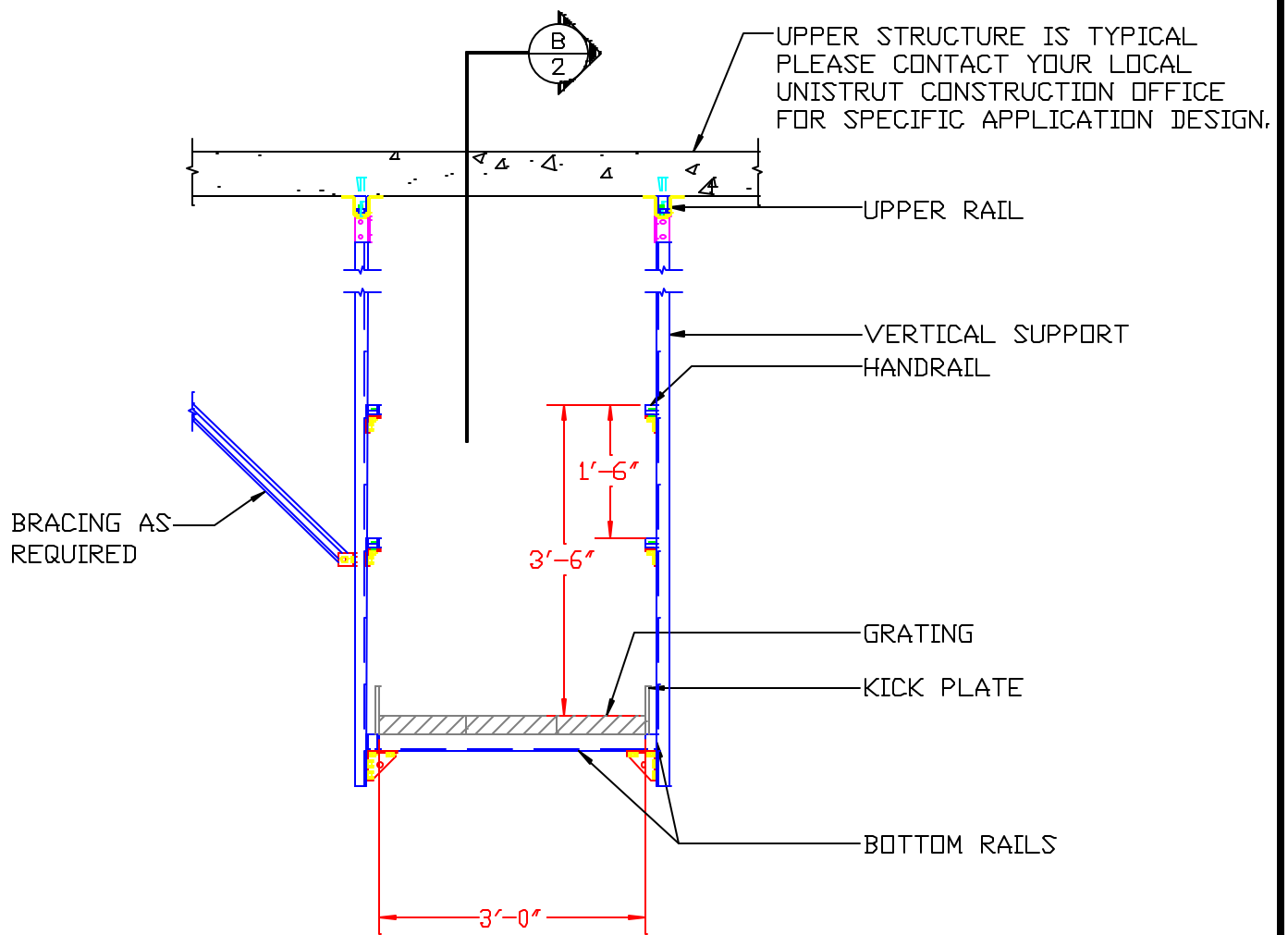
**SECTION: UNISTRUT CATWALK**  
 SCALE: 1/2" = 1'-0"

<b>UNISTRUT CORPORATION</b> DESIGN & INSTALLATION CONSTRUCTION DIVISION PHONE: 1-800-468-9510	UNISTRUT CATWALK SYSTEM		CW-A-CB
	BY SB	DATE 12/08/03	SHEET 1 OF 2

**GENERAL NOTES**

1. THIS UNISTRUT CATWALK SYSTEM IS DESIGNED TO SUPPORT A MAXIMUM UNIFORM LOAD OF \_\_\_ PSF. \*
2. AREA DIRECTLY ABOVE THE VERTICAL SUPPORT TO BE FREE AND CLEAR OF ALL OBSTRUCTIONS.
3. EXISTING STRUCTURE TO BE CHECKED BY OTHERS.
4. ALL CHANNEL & FITTINGS TO HAVE STANDARD UNISTRUT "PERMA-GREEN" FINISH AND ALL HARDWARE TO BE ELECTRO-GALVANIZED.

\* DESIGN LOAD VARIES BASED ON MAXIMUM SPANS - PLEASE CONTACT YOUR LOCAL UNISTRUT OFFICE FOR SPECIFIC LOADING DESIGN.



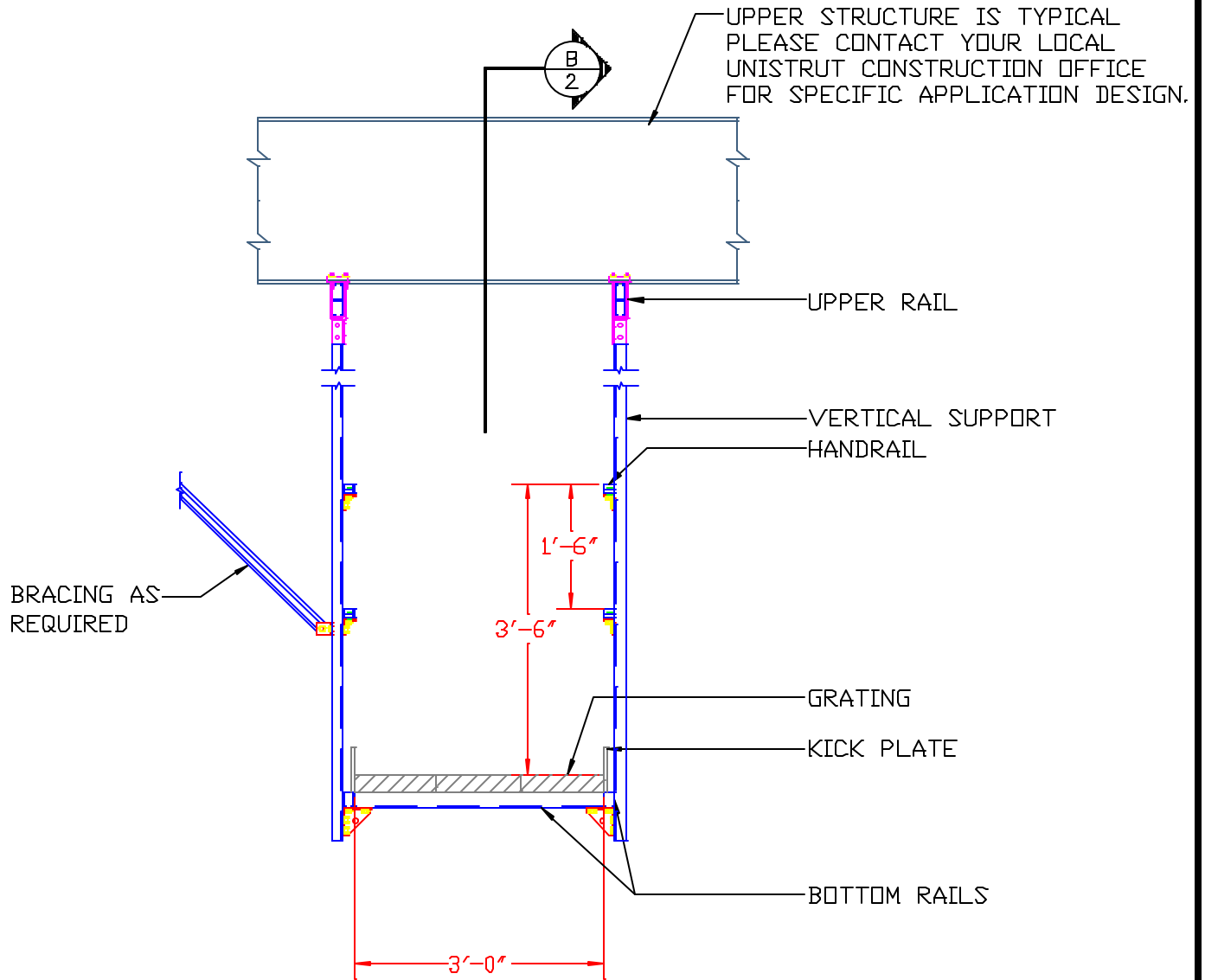
**SECTION: UNISTRUT CATWALK**  
 SCALE: 1/2" = 1'-0"

<b>UNISTRUT CORPORATION</b> DESIGN & INSTALLATION CONSTRUCTION DIVISION PHONE: 1-800-468-9510	UNISTRUT CATWALK SYSTEM		CW-A-CS
	BY SB	DATE 12/08/03	SHEET 1 OF 2

**GENERAL NOTES**

1. THIS UNISTRUT CATWALK SYSTEM IS DESIGNED TO SUPPORT A MAXIMUM UNIFORM LOAD OF \_\_\_ PSF. \*
2. AREA DIRECTLY ABOVE THE VERTICAL SUPPORT TO BE FREE AND CLEAR OF ALL OBSTRUCTIONS.
3. EXISTING STRUCTURE TO BE CHECKED BY OTHERS.
4. ALL CHANNEL & FITTINGS TO HAVE STANDARD UNISTRUT "PERMA-GREEN" FINISH AND ALL HARDWARE TO BE ELECTRO-GALVANIZED.

\* DESIGN LOAD VARIES BASED ON MAXIMUM SPANS - PLEASE CONTACT YOUR LOCAL UNISTRUT OFFICE FOR SPECIFIC LOADING DESIGN.



**SECTION: UNISTRUT CATWALK**  
 SCALE: 1/2" = 1'-0"

**UNISTRUT CORPORATION**  
 DESIGN & INSTALLATION  
 CONSTRUCTION DIVISION  
 PHONE: 1-800-468-9510

UNISTRUT CATWALK SYSTEM

BY SB

DATE 12/08/03

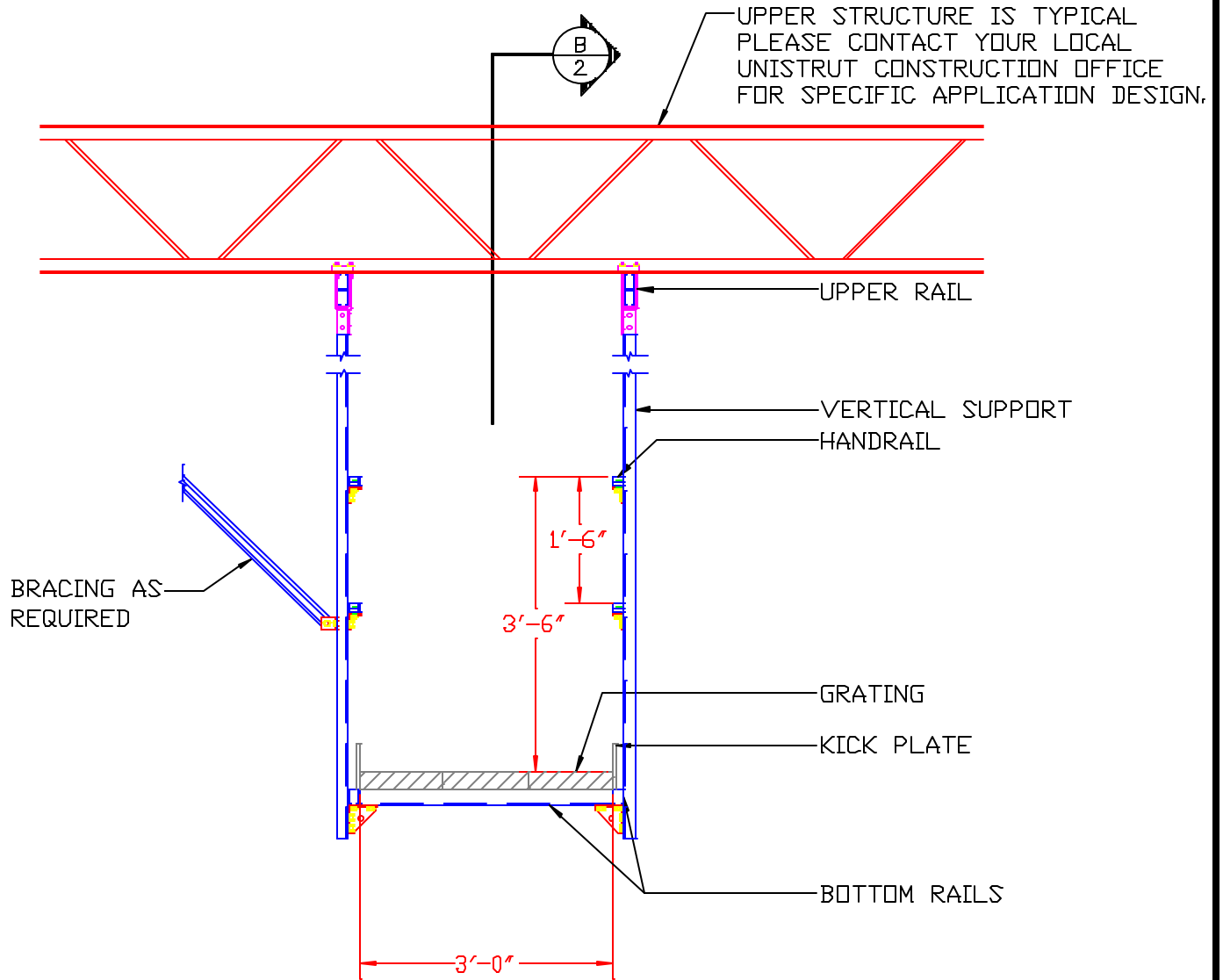
CW-A-SB

SHEET  
 1 OF 2

**GENERAL NOTES**

1. THIS UNISTRUT CATWALK SYSTEM IS DESIGNED TO SUPPORT A MAXIMUM UNIFORM LOAD OF \_\_\_ PSF. \*
2. AREA DIRECTLY ABOVE THE VERTICAL SUPPORT TO BE FREE AND CLEAR OF ALL OBSTRUCTIONS.
3. EXISTING STRUCTURE TO BE CHECKED BY OTHERS.
4. ALL CHANNEL & FITTINGS TO HAVE STANDARD UNISTRUT "PERMA-GREEN" FINISH AND ALL HARDWARE TO BE ELECTRO-GALVANIZED.

\* DESIGN LOAD VARIES BASED ON MAXIMUM SPANS - PLEASE CONTACT YOUR LOCAL UNISTRUT OFFICE FOR SPECIFIC LOADING DESIGN.



**A**  
1 SECTION: UNISTRUT CATWALK  
SCALE: 1/2" = 1'-0"

**UNISTRUT CORPORATION**  
DESIGN & INSTALLATION  
CONSTRUCTION DIVISION  
PHONE: 1-800-468-9510

UNISTRUT CATWALK SYSTEM

BY SB

DATE 12/08/03

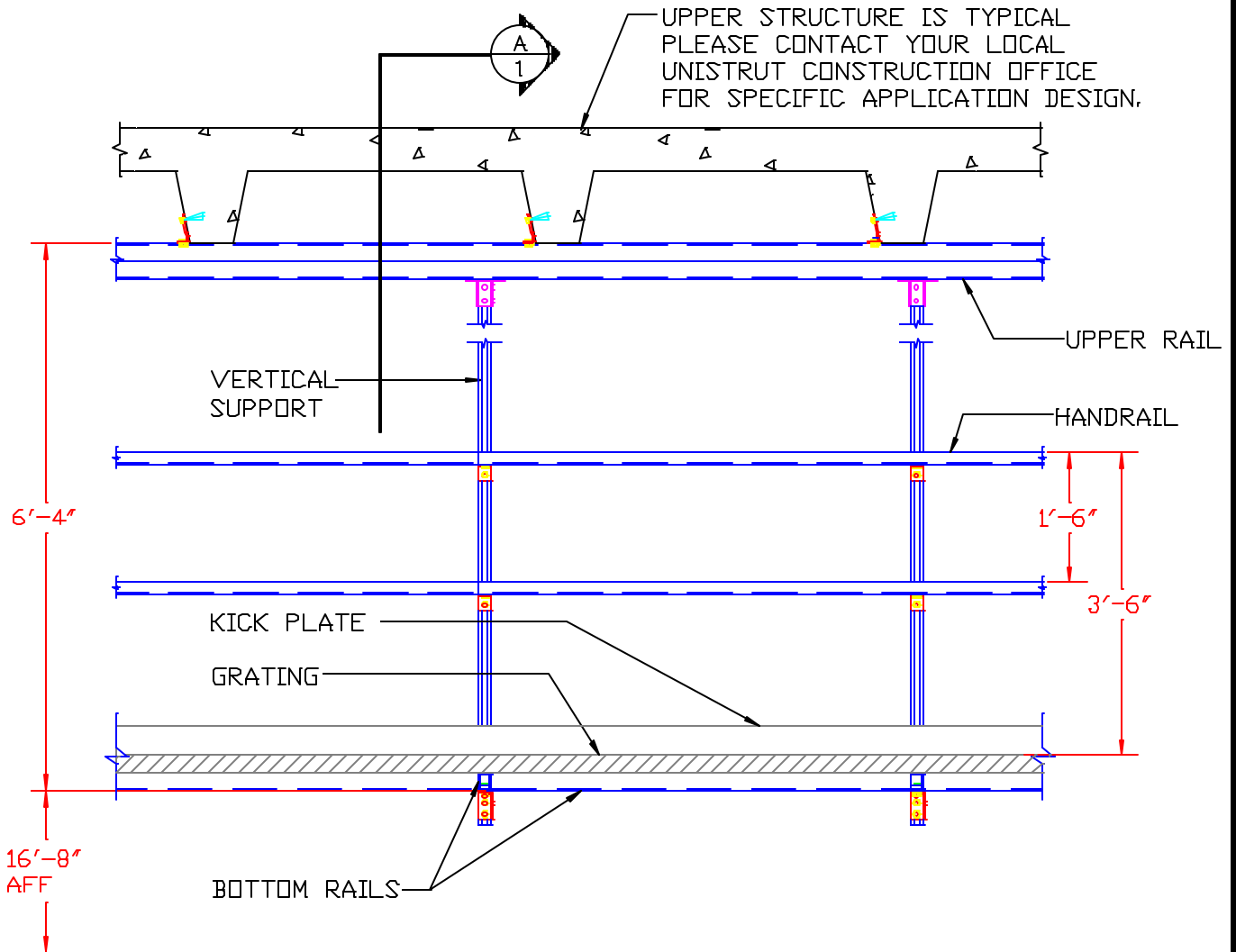
CW-A-SJ

SHEET  
1 OF 2

**GENERAL NOTES**

1. THIS UNISTRUT CATWALK SYSTEM IS DESIGNED TO SUPPORT A MAXIMUM UNIFORM LOAD OF \_\_\_ PSF. \*
2. AREA DIRECTLY ABOVE THE VERTICAL SUPPORT TO BE FREE AND CLEAR OF ALL OBSTRUCTIONS.
3. EXISTING STRUCTURE TO BE CHECKED BY OTHERS.
4. ALL CHANNEL & FITTINGS TO HAVE STANDARD UNISTRUT "PERMA-GREEN" FINISH AND ALL HARDWARE TO BE ELECTRO-GALVANIZED.

\* DESIGN LOAD VARIES BASED ON MAXIMUM SPANS - PLEASE CONTACT YOUR LOCAL UNISTRUT OFFICE FOR SPECIFIC LOADING DESIGN.



SECTION: UNISTRUT CATWALK  
SCALE: 1/2" = 1'-0"

**UNISTRUT CORPORATION**  
DESIGN & INSTALLATION  
CONSTRUCTION DIVISION  
PHONE: 1-800-468-9510

UNISTRUT CATWALK SYSTEM

BY SB

DATE 12/08/03

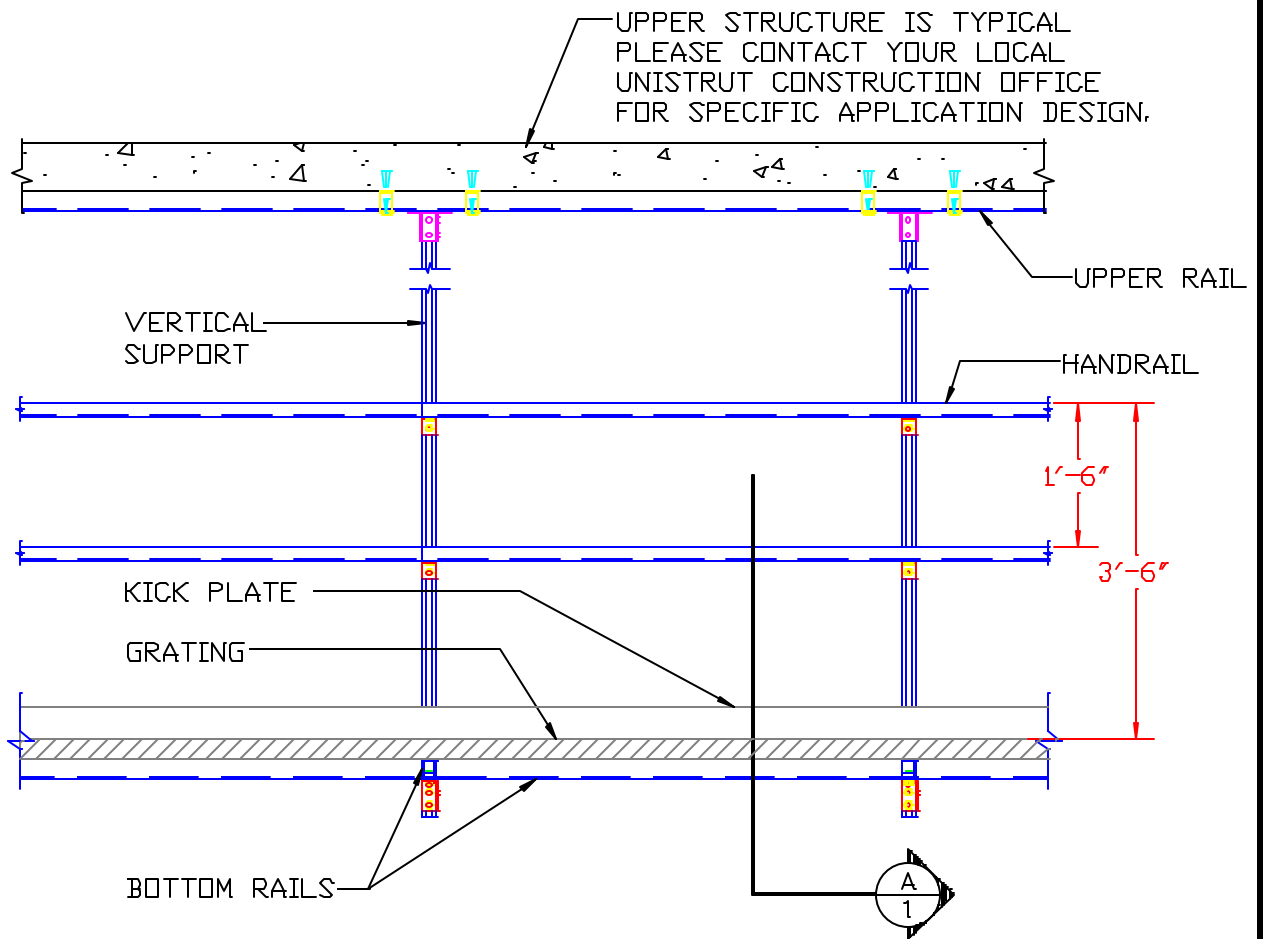
CW-B-CB

SHEET  
2 OF 2

GENERAL NOTES

1. THIS UNISTRUT CATWALK SYSTEM IS DESIGNED TO SUPPORT A MAXIMUM UNIFORM LOAD OF \_\_\_ PSF. \*
2. AREA DIRECTLY ABOVE THE VERTICAL SUPPORT TO BE FREE AND CLEAR OF ALL OBSTRUCTIONS.
3. EXISTING STRUCTURE TO BE CHECKED BY OTHERS.
4. ALL CHANNEL & FITTINGS TO HAVE STANDARD UNISTRUT "PERMA-GREEN" FINISH AND ALL HARDWARE TO BE ELECTRO-GALVANIZED.

\* DESIGN LOAD VARIES BASED ON MAXIMUM SPANS - PLEASE CONTACT YOUR LOCAL UNISTRUT OFFICE FOR SPECIFIC LOADING DESIGN.



SECTION: UNISTRUT CATWALK  
SCALE: 1/2" = 1'-0"

**UNISTRUT CORPORATION**  
DESIGN & INSTALLATION  
CONSTRUCTION DIVISION  
PHONE: 1-800-468-9510

UNISTRUT CATWALK SYSTEM

BY SB

DATE 12/08/03

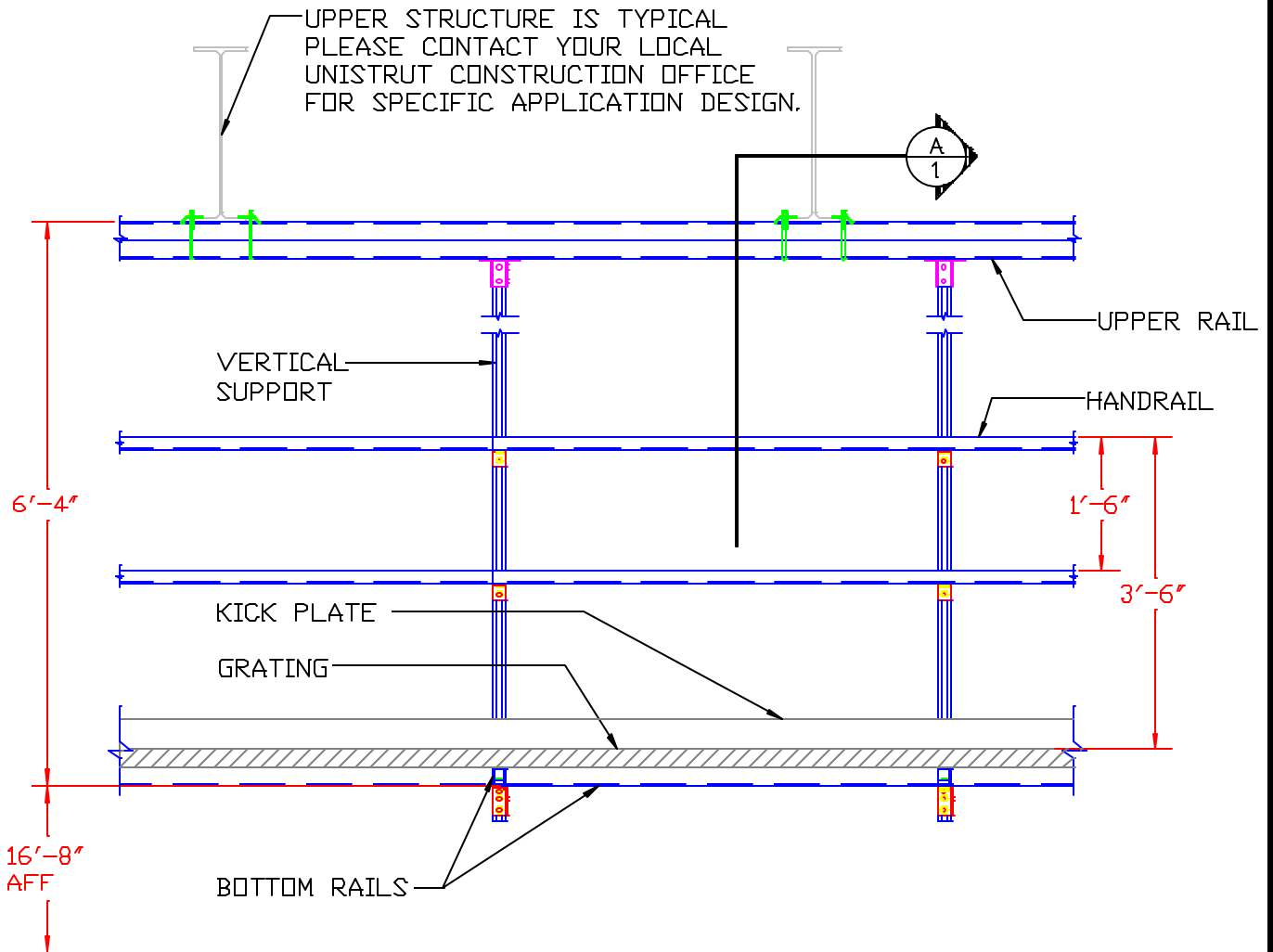
CW-B-CS

SHEET  
2 OF 2

**GENERAL NOTES**

1. THIS UNISTRUT CATWALK SYSTEM IS DESIGNED TO SUPPORT A MAXIMUM UNIFORM LOAD OF \_\_\_ PSF. \*
2. AREA DIRECTLY ABOVE THE VERTICAL SUPPORT TO BE FREE AND CLEAR OF ALL OBSTRUCTIONS.
3. EXISTING STRUCTURE TO BE CHECKED BY OTHERS.
4. ALL CHANNEL & FITTINGS TO HAVE STANDARD UNISTRUT "PERMA-GREEN" FINISH AND ALL HARDWARE TO BE ELECTRO-GALVANIZED.

\* DESIGN LOAD VARIES BASED ON MAXIMUM SPANS - PLEASE CONTACT YOUR LOCAL UNISTRUT OFFICE FOR SPECIFIC LOADING DESIGN.



SECTION: UNISTRUT CATWALK  
SCALE: 1/2" = 1'-0"

**UNISTRUT CORPORATION**

DESIGN & INSTALLATION  
CONSTRUCTION DIVISION  
PHONE: 1-800-468-9510

UNISTRUT CATWALK SYSTEM

BY SB

DATE 12/08/03

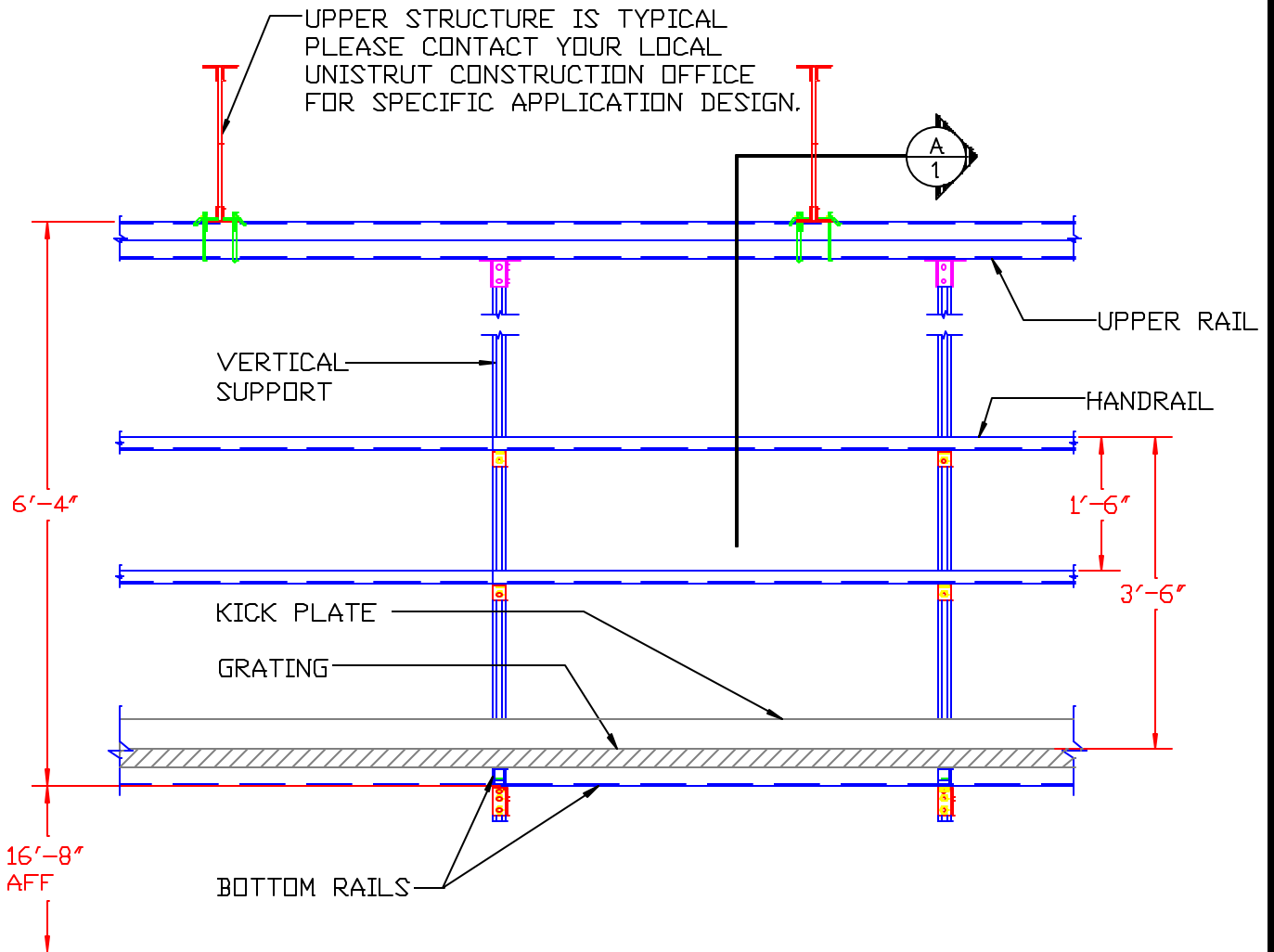
CW-B-SB

SHEET  
2 OF 2

**GENERAL NOTES**

1. THIS UNISTRUT CATWALK SYSTEM IS DESIGNED TO SUPPORT A MAXIMUM UNIFORM LOAD OF \_\_\_ PSF.\*
2. AREA DIRECTLY ABOVE THE VERTICAL SUPPORT TO BE FREE AND CLEAR OF ALL OBSTRUCTIONS.
3. EXISTING STRUCTURE TO BE CHECKED BY OTHERS.
4. ALL CHANNEL & FITTINGS TO HAVE STANDARD UNISTRUT "PERMA-GREEN" FINISH AND ALL HARDWARE TO BE ELECTRO-GALVANIZED.

\* DESIGN LOAD VARIES BASED ON MAXIMUM SPANS - PLEASE CONTACT YOUR LOCAL UNISTRUT OFFICE FOR SPECIFIC LOADING DESIGN.



SECTION: UNISTRUT CATWALK  
SCALE: 1/2" = 1'-0"

**UNISTRUT CORPORATION**  
DESIGN & INSTALLATION  
CONSTRUCTION DIVISION  
PHONE: 1-800-468-9510

UNISTRUT CATWALK SYSTEM

BY SB

DATE 12/08/03

CW-B-SJ

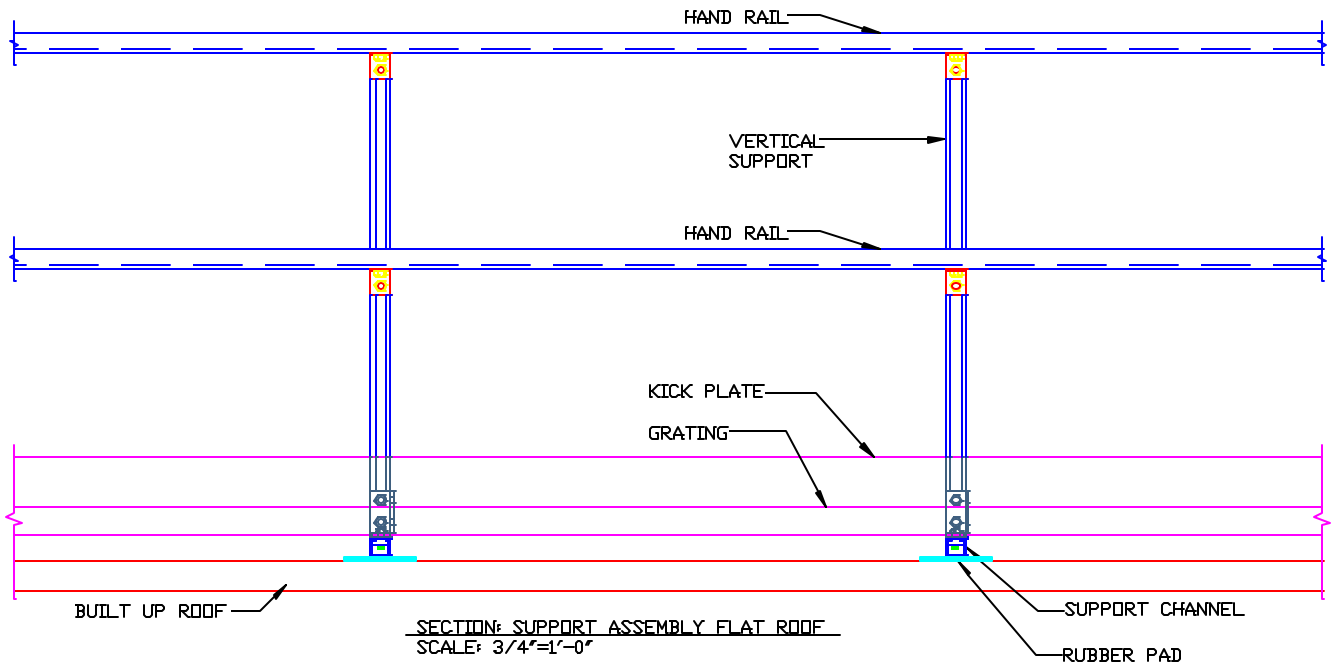
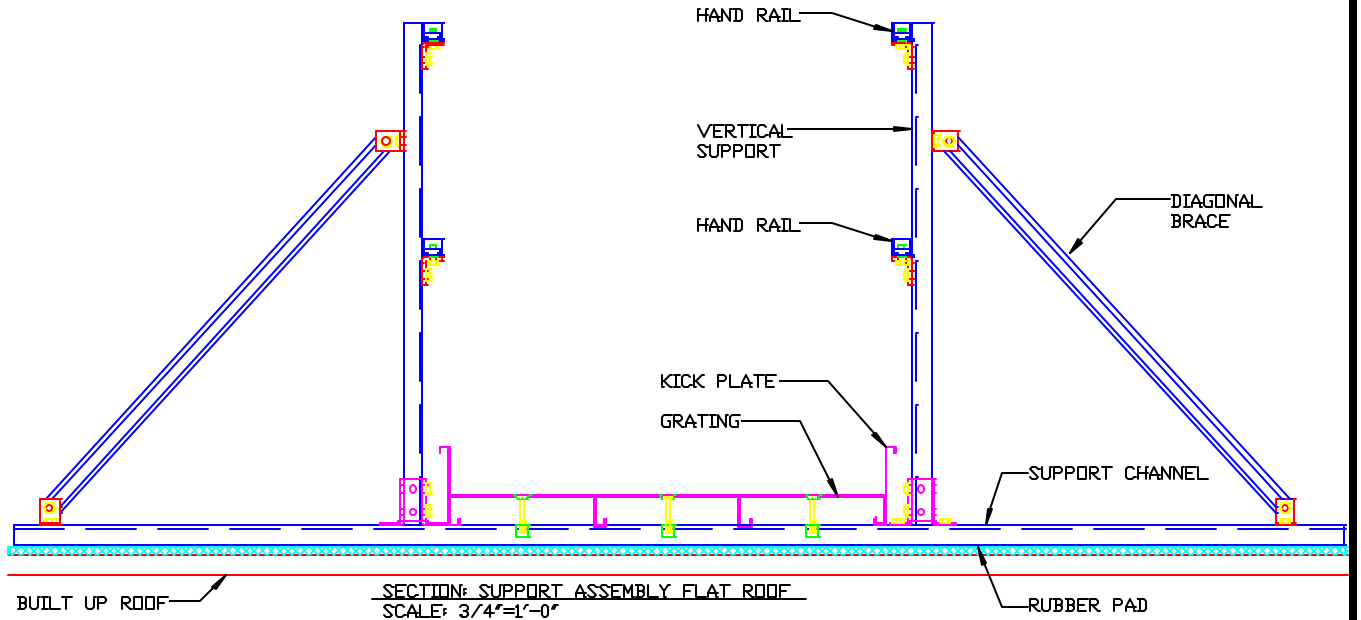
SHEET  
2 OF 2



GENERAL NOTES

1. THIS UNISTRUT ROOF WALK SYSTEM IS DESIGNED TO SUPPORT A MAXIMUM UNIFORM LOAD OF \_\_\_ PSF. \*
2. EXISTING STRUCTURE TO BE CHECKED BY OTHERS.
3. ALL CHANNEL & FITTINGS TO HAVE STANDARD UNISTRUT "PERMA-GREEN" FINISH AND ALL HARDWARE TO BE ELECTRO-GALVANIZED.

\* DESIGN LOAD VARIES BASED ON MAXIMUM SPANS - PLEASE CONTACT YOUR LOCAL UNISTRUT OFFICE FOR SPECIFIC LOADING DESIGN.



**UNISTRUT CORPORATION**  
 DESIGN & INSTALLATION  
 CONSTRUCTION DIVISION  
 PHONE: 1-800-468-9510

UNISTRUT ROOF WALK SYSTEM

BY SB

DATE 12/08/03

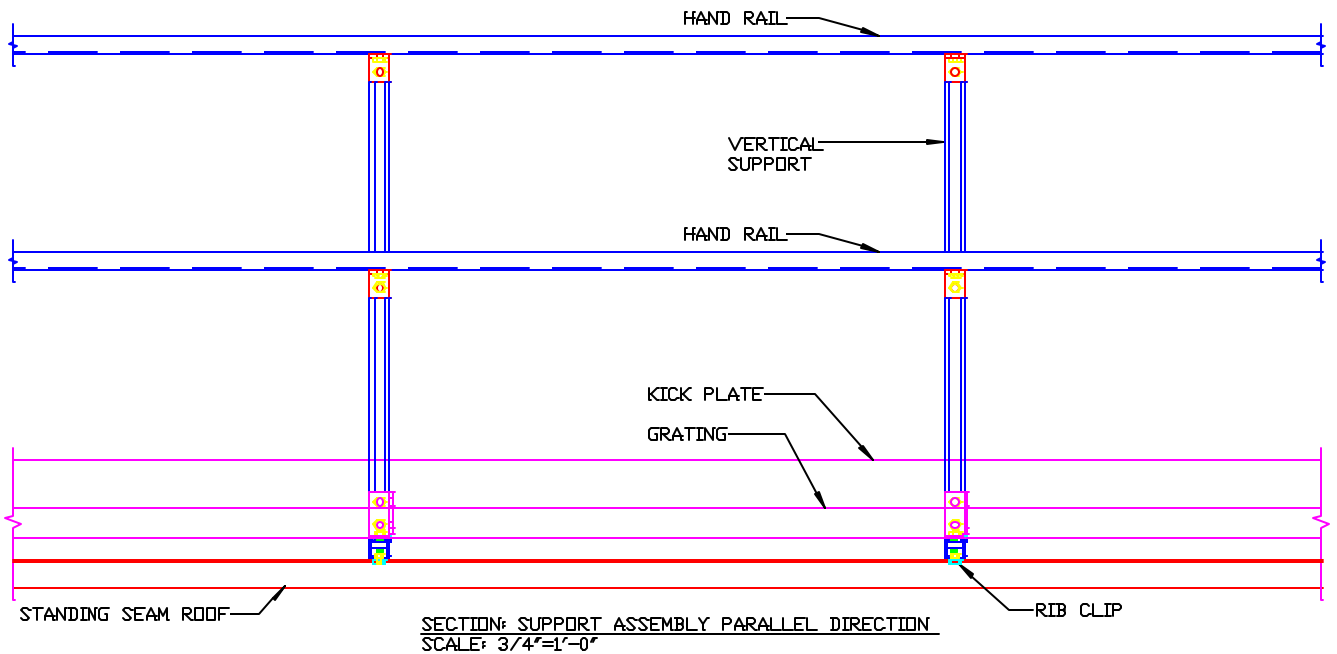
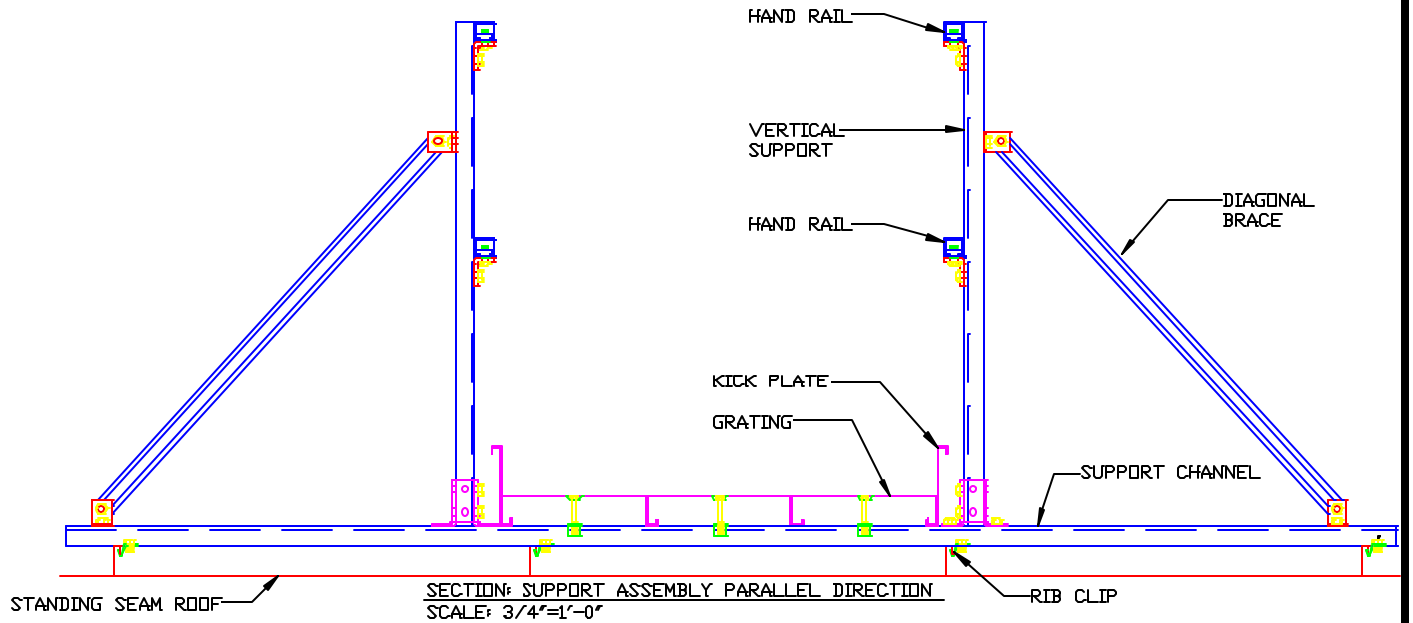
RW-FR

SHEET  
 1 OF 1

GENERAL NOTES

1. THIS UNISTRUT ROOF WALK SYSTEM IS DESIGNED TO SUPPORT A MAXIMUM UNIFORM LOAD OF \_\_\_ PSF. \*
2. EXISTING STRUCTURE TO BE CHECKED BY OTHERS.
3. ALL CHANNEL & FITTINGS TO HAVE STANDARD UNISTRUT "PERMA-GREEN" FINISH AND ALL HARDWARE TO BE ELECTRO-GALVANIZED.

\* DESIGN LOAD VARIES BASED ON MAXIMUM SPANS - PLEASE CONTACT YOUR LOCAL UNISTRUT OFFICE FOR SPECIFIC LOADING DESIGN.



**UNISTRUT CORPORATION**  
DESIGN & INSTALLATION  
CONSTRUCTION DIVISION  
PHONE: 1-800-468-9510

UNISTRUT ROOF WALK SYSTEM

BY SB

DATE 12/08/03

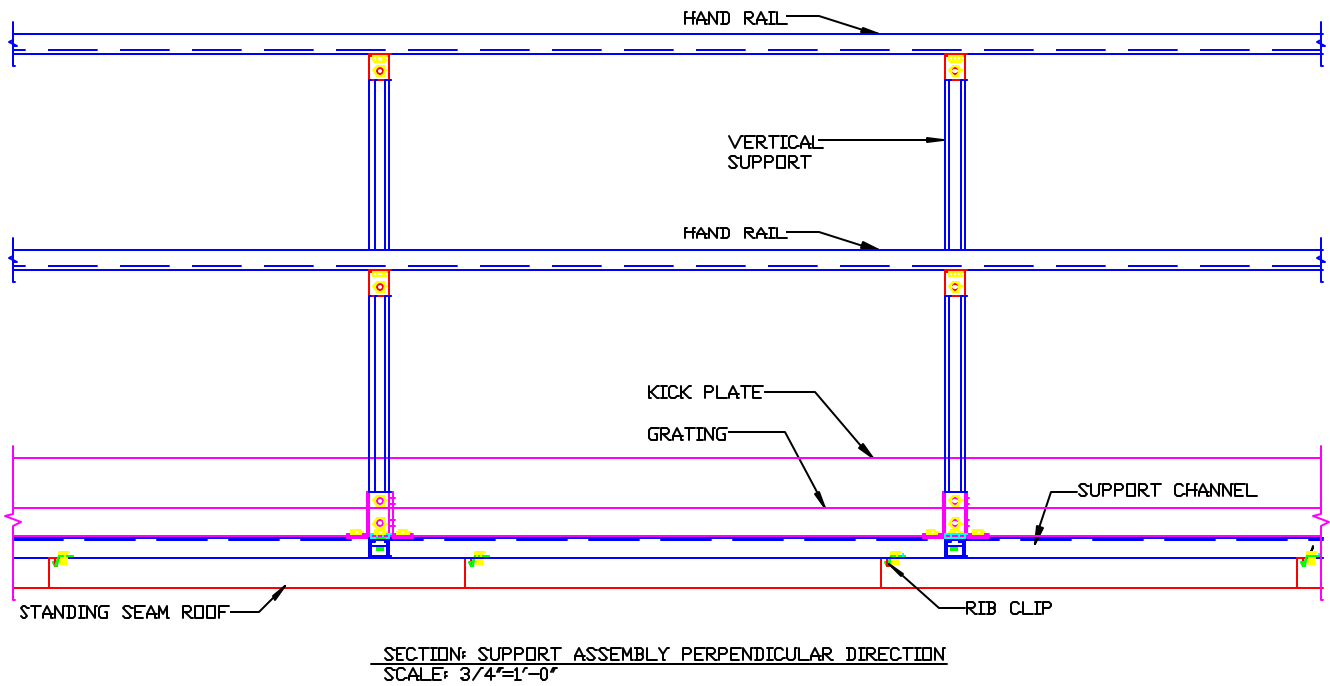
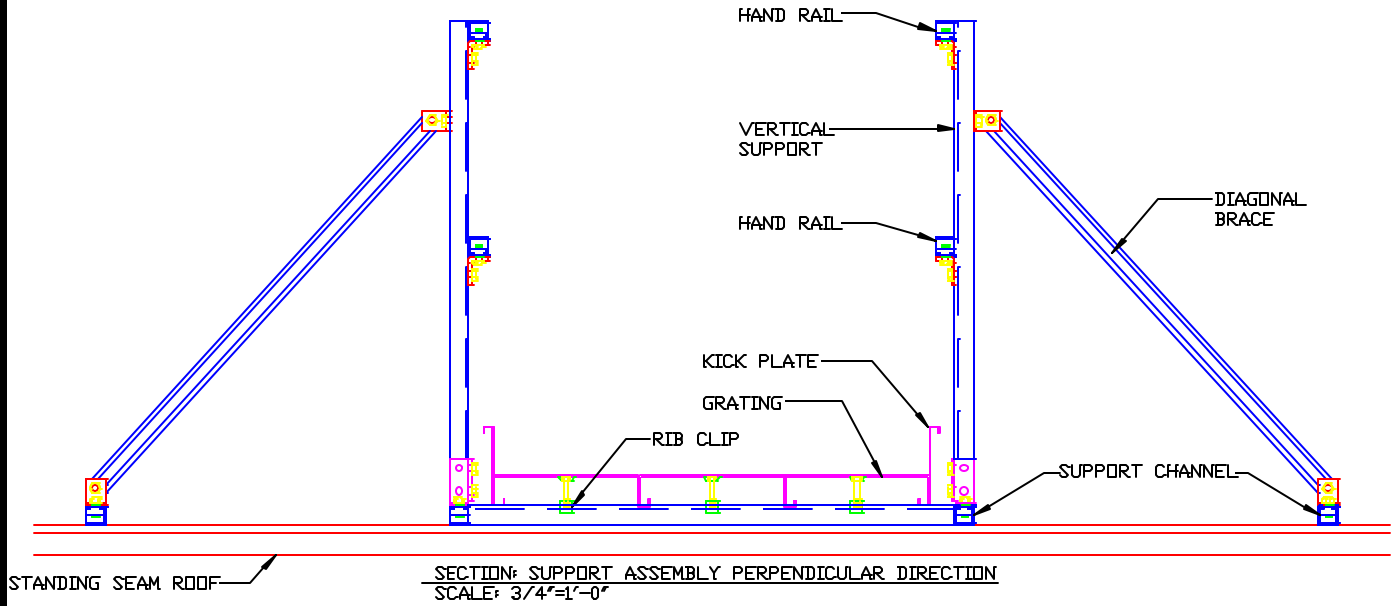
RW-SS-PARA

SHEET  
1 OF 1

GENERAL NOTES

1. THIS UNISTRUT ROOF WALK SYSTEM IS DESIGNED TO SUPPORT A MAXIMUM UNIFORM LOAD OF \_\_\_ PSF. \*
2. EXISTING STRUCTURE TO BE CHECKED BY OTHERS.
3. ALL CHANNEL & FITTINGS TO HAVE STANDARD UNISTRUT "PERMA-GREEN" FINISH AND ALL HARDWARE TO BE ELECTRO-GALVANIZED.

\* DESIGN LOAD VARIES BASED ON MAXIMUM SPANS - PLEASE CONTACT YOUR LOCAL UNISTRUT OFFICE FOR SPECIFIC LOADING DESIGN.



**UNISTRUT CORPORATION**  
DESIGN & INSTALLATION  
CONSTRUCTION DIVISION  
PHONE: 1-800-468-9510

UNISTRUT ROOF WALK SYSTEM

BY SB

DATE 12/08/03

RW-SS-PERP

SHEET  
1 OF 1

# UNISTRUT CATWALK & ROOFWALK ARCHITECTURAL SPECIFICATIONS

## Section 05500

### PART 1—GENERAL

#### 1.1 SCOPE OF WORK

- A. Provide all material and labor required for the catwalk/roofwalk as indicated in the contract documents.

#### 1.2 RELATED WORK SPECIFIED ELSEWHERE

- A. Structural Steel
- B. Cold Formed Metal Framing
- C. Metal Fabrications

#### 1.3 QUALITY ASSURANCE

- A. Material shall be provided by a qualified contractor with at least ten (10) years experience in the manufacture and installation of catwalk/roofwalk systems.
- B. Anti-Skid surfaced grating shall conform to Federal Specification RR-G-1602A.
- C. The Grating shall be designed to withstand the following load criteria:
  1. Uniform Live Load \_\_\_\_\_ psf.
  2. Concentrated Load \_\_\_\_\_ lbs.
- D. Contractor shall certify that grating has been tested, indicating maximum allowable uniform and concentrated loads, with a factor of safety of 2, per AISC, Section 6.
- E. If product is required in nuclear and/or safety related application, it shall be supplied under the requirements of nuclear specification 10CFR 50 appendix B.

#### 1.4 SUBMITTALS

- A. Contractor shall submit shop drawings showing grating layout, support structure and detailed sections depicting assembly.

### PART 2—PRODUCTS

#### 2.1 ACCEPTABLE MANUFACTURER/VENDORS

- A. Provide products from the following manufacturer or an approved equal: Unistrut Corporation (United Interlock Grating)
- B. Installation to be done by Unistrut Construction or an approved equivalent contractor.

#### 2.2 PRODUCTS

- A. Grating shall be United Interlock Plank Grating System, as manufactured by Unistrut Corporation, 35660 Clinton Street, Wayne, Michigan 48184
- B. Materials shall conform to ASTM A653, Grade A with a Class G-90 coating.
- C. Material shall be \_\_\_\_\_ gauge. With a leg height of \_\_\_\_\_ inches.
- D. The surface pattern shall provide a minimum of 35% but not more than 42% open area. Openings shall be a minimum of 4" long and a maximum of 3/4" width. The surface shall be \_\_\_\_\_.
  1. Anti-Skid surface shall provide 360° positive traction and be made of tapered self-cleaning teeth, approximately 1/8" high
  2. Anti-Skid surface teeth shall have slots approximately 1/16" wide by 3/8" long, uniformly spaced with a minimum of 60 and a maximum of 80 teeth per square foot.

### PART 3—INSTALLATION

#### 3.1 SITE EXAMINATION

- A. Contractor shall examine the support structure, work area and conditions for the grating installation. If the supports, area or conditions are not satisfactory, installation shall not commence until satisfactory conditions are present.

### 3.2 ERECTION

- A. Grating shall be installed as detailed on the approved shop drawings.
- B. Grating shall be installed in single, unspliced sections for all requirements to 20' lengths.
- C. Grating shall interlock, with male-female legs providing a lock prohibiting horizontal movement. The outside leg of all members shall be male.
- D. Connections of grating to support elements shall be by bolting, clamping, screwing, welding or use of a manufacturers approved hold-down clip.