

# CUSH-A-NATOR<sup>®</sup>

**A NEW BREAKTHROUGH IN  
CUSHIONED CLAMPING**

**NEW**

Patent D702113

Cush-A-Nator  
"Cool Blue"



Cush-A-Nator  
Standard

## UNISTRUT<sup>®</sup>

A PART OF **atkore**  
INTERNATIONAL

The Cush-A-Nator cushion is designed to provide the user with a choice of the highest heat range resistance of any cushion on the market or simply the advance features of a superior design. The Cush-A-Nator is manufactured in the United States and made from a new durable proprietary thermoplastic rubber that resists high heat and provides longer life against vibration fatigue.

For more information, visit [unistrut.us](http://unistrut.us) or contact your local sales rep.

### CUSH-A-NATOR FEATURES



- A** Thumb Drive: The Cush-A-Nator has the exclusive "Thumb Drive" that provides the installer a gripping point to easily open the cushion. With the help of leverage tabs and a living hinge, cushions are easy and effortless to install.
- B** Self-Alignment Cushion can be opened and placed over the pipe or tube and rotated into place while on the channel and automatically aligned with the channel opening ready for clamping.
- C** Pressure Control: The Cush-A-Nator cushion has a built in squeeze control as part of the cushion design. The side opening and the squeeze control tab provides evenly distributed pressure around the tube or pipe.
- D** Complete Clamping Unit: The Cush-A-Nator is the only strut mounted cushion that is mechanically connected to the supporting steel clamp because the bolt passes through the squeeze control tab forming the single unit connection. This design helps prevent the cushion from separating from the steel clamp.

## CUSH-A-NATOR®

The Cush-A-Nator cushion is manufactured in the United States and made from a new incredibly durable thermoplastic rubber that resists high heat and provides longer life against vibration fatigue. The Cush-A-Nator is made from a proprietary, thermoplastic, vulcanized material that is crosslinked with high performance rubber and thermoplastic elastomers. This results in cushions with the highest operating temperature range in the industry.



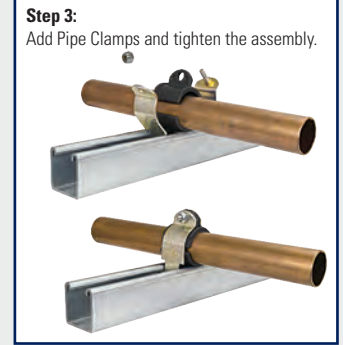
The Cush-A-Nator standard has an operating range of -50°F to 275°F (-45°C to 135°C)



The Cush-A-Nator "Cool Blue" has service temperatures of -65°F to 340°F (-53°C to 170°C)

CUSH-A-NATOR® Standard Extended Temperature -50°F to 275°F			CUSH-A-NATOR® "Cool Blue" Extended Temperature of -65°F to 340°F		
PART NUMBER	DESCRIPTION	CLAMP MATERIAL	PART NUMBER	DESCRIPTION	MATERIAL
CN04	CUSH-A-NATOR 1/4 O.D. TUBE	Steel	HT04	CUSH-A-NATOR HIGH TEMP BLUE 1/4 O.D. TUBE	Steel
CN06	CUSH-A-NATOR 3/8 O.D. TUBE	Steel	HT06	CUSH-A-NATOR HIGH TEMP BLUE 3/8 O.D. TUBE	Steel
CN08	CUSH-A-NATOR 1/2 O.D. TUBE	Steel	HT08	CUSH-A-NATOR HIGH TEMP BLUE 1/2 O.D. TUBE	Steel
CN10	CUSH-A-NATOR 5/8 O.D. TUBE	Steel	HT10	CUSH-A-NATOR HIGH TEMP BLUE 5/8 O.D. TUBE	Steel
CN12	CUSH-A-NATOR 3/4 O.D. TUBE	Steel	HT14	CUSH-A-NATOR HIGH TEMP BLUE 7/8 O.D. TUBE	Steel
CN14	CUSH-A-NATOR 7/8 O.D. TUBE	Steel	HT16	CUSH-A-NATOR HIGH TEMP BLUE 1 O.D. TUBE	Steel
CN16	CUSH-A-NATOR 1 O.D. TUBE	Steel	HT18	CUSH-A-NATOR HIGH TEMP BLUE 1-1/8 O.D. TUBE	Steel
CN18	CUSH-A-NATOR 1-1/8 O.D. TUBE	Steel	HT22	CUSH-A-NATOR HIGH TEMP BLUE 1-3/8 O.D. TUBE	Steel
CN22	CUSH-A-NATOR 1-3/8 O.D. TUBE	Steel	HT24	CUSH-A-NATOR HIGH TEMP BLUE 1-1/2 O.D. TUBE	Steel
CN24	CUSH-A-NATOR 1-1/2 O.D. TUBE	Steel	HT26	CUSH-A-NATOR HIGH TEMP BLUE 1-5/8 O.D. TUBE	Steel
CN26	CUSH-A-NATOR 1-5/8 O.D. TUBE	Steel	HT34	CUSH-A-NATOR HIGH TEMP BLUE 2-1/8 O.D. TUBE	Steel
CN34	CUSH-A-NATOR 2-1/8 O.D. TUBE	Steel			

## CUSH-A-NATOR® – NEW INSTALLATIONS



## CUSH-A-NATOR – RETROFIT / REPLACEMENT APPLICATIONS

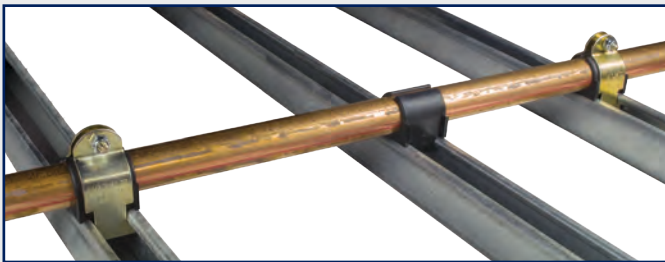
A key feature of the Cush-A-Nator is this ability to place the cushion and rotate into position.  
*Perfect for retrofit applications!*

### Retrofit - The Common Problem

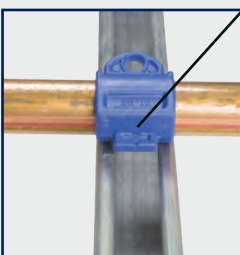
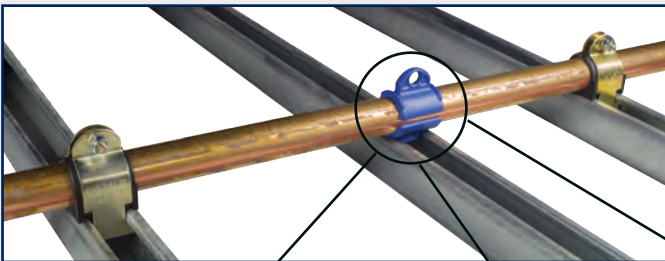
Replacing a cushion within a long pipe run poses a problem. Clamps before and after the one to be replaced prohibit the pipe from being raised so that the new cushion can be installed correctly. All too often a work-around is used which compromises the connection.

### Retrofit - The Perfect Solution

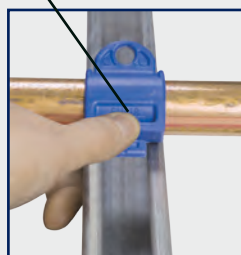
**Step 1:** Remove Bad Cushion.



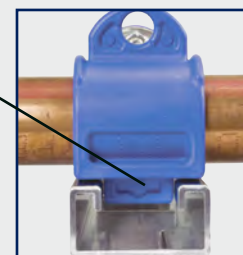
**Step 3:** Rotated into place while on the channel and the Self-Alignment tab automatically aligns with the channel opening ready for clamping.



Rotate into position

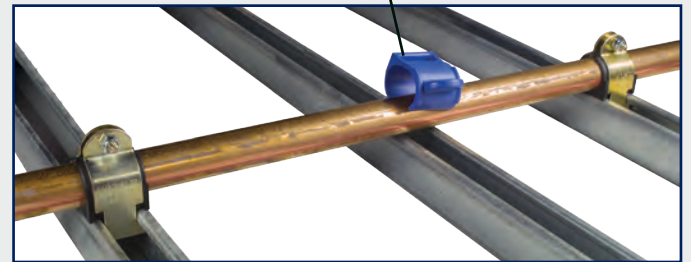


Thumb Drive



"Self-Alignment"

**Step 2:** The Cush-A-Nator can be installed without raising the pipe. The unique "Thumb Drive" allows you to rotate the Cush-A-Nator into position.



**Step 3:** Add Pipe Clamps and tighten the assembly.

