

Medical Equipment

MODULAR STRUCTURAL SUPPORT SYSTEMS



UNISTRUT
MIDWEST





Unistrut Midwest Medical Equipment

TABLE OF CONTENTS

Typical Medical Supports	5
Surgical Lights	7
Cath Lab	9
X-Ray	11
Unistrut Medical Support Booms	15
Prefabrication	17
Unistrut Multi-Trade Racks	19
Sikla	23
Multi-Trade Racks	24
Pipe Racks	25
Riser Racks	26
T&H Supports	27
Roofwalks, Crossovers, and Catwalks	29
Roofwalks	30
Crossovers	31
Catwalks	33
Concrete Inserts	35

WHO WE ARE

Unistrut Midwest is a nationwide healthcare contractor with a focus on Unistrut and Sikla medical supports and multi-trade racks, with five locations across the US.

We offer turnkey solutions for any secondary modular steel support system, from conceptual design, budgeting, engineering, BIM coordination, material supply, prefabrication, assembly, and delivery. We deliver results exceeding our clients' expectations and are committed to providing the highest quality customer service.

WHY CHOOSE US



Deep Industry Experience

We are committed to providing innovative solutions that will help you complete your project faster and on a schedule.



Dedicated Engineering Services

We have the ability to dedicate resources to your projects in an expedited timeline.



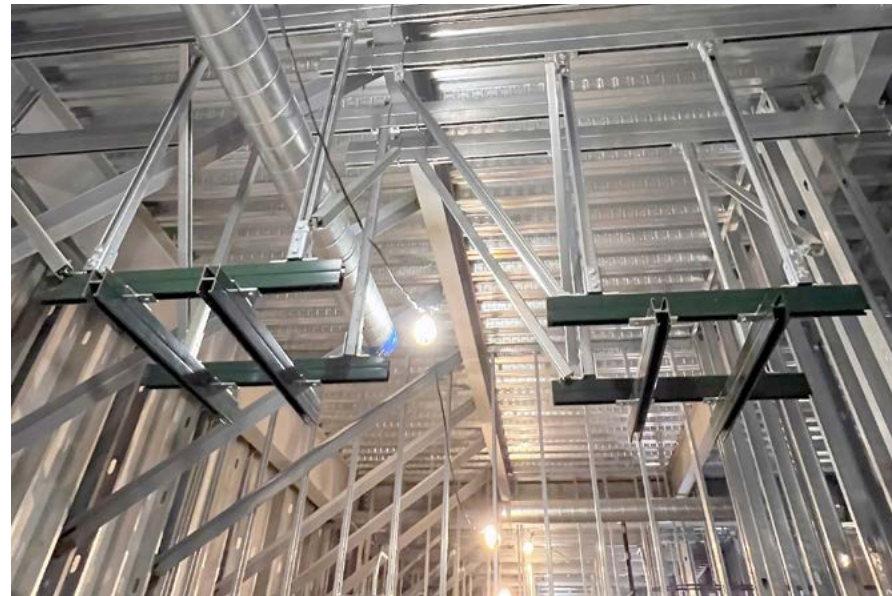
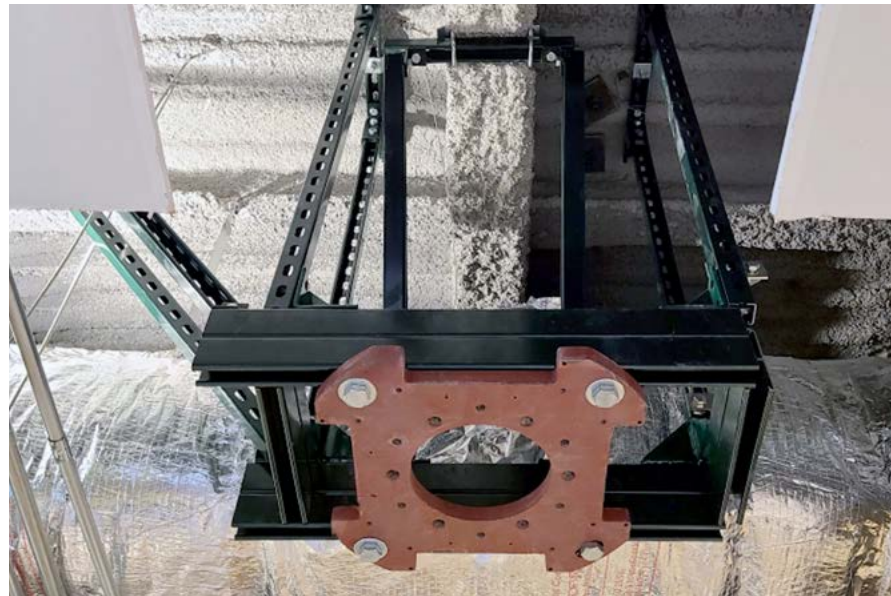
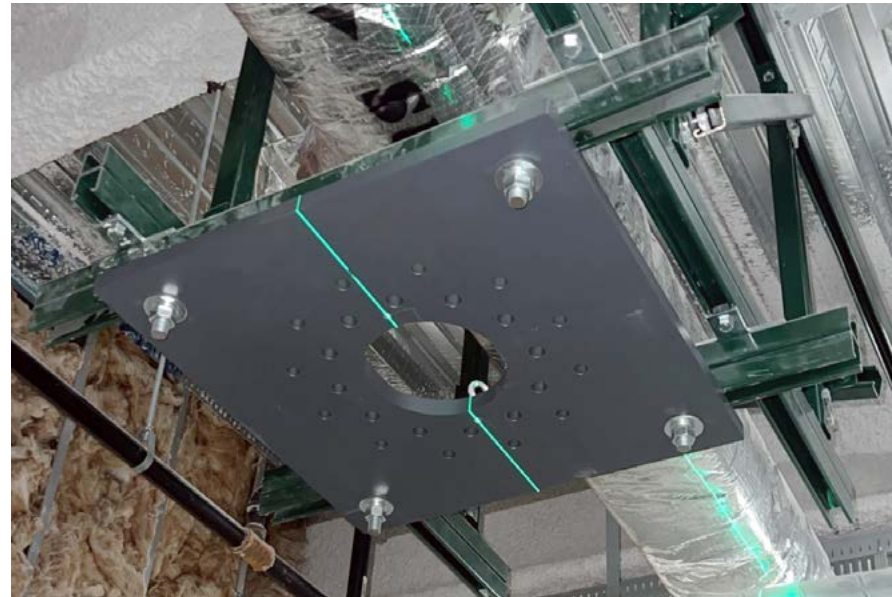
Speed To Market Focus

We understand the importance of delivering your project on time and within budget, and we work with you to optimize the schedule and minimize disruptions.



Typical Medical Supports

Unistrut Midwest has been involved in the engineering, design, and installation of medical equipment supports for over seven decades. Our proven systems support X-Ray equipment, Surgical Lighting, Cath Labs, CT Injectors, as well as other specialized medical equipment in healthcare facilities worldwide. Unlike other medical equipment support materials, our system features components designed specifically to meet the performance demands of the most advanced medical equipment.



Surgical Lights

Surgical Light systems have become more intricate, which has led to higher loading requirements. The deadloads and moments have also increased substantially requiring a more robust support structure to meet vendors deflection criteria. The Surgical Lights often require a "medium duty" Unistrut Support System utilizing standard Unistrut Channels, Fittings, and Beam Clamps. Exam Lights will require "light duty" Unistrut supports utilizing the smaller Unistrut profiles but similar fittings and hardware.

- Installed in hours, adjustments in minutes
- All-Bolted Solutions, no welding or hot works permit required
- Simple field adjustments are possible around unforeseen obstructions



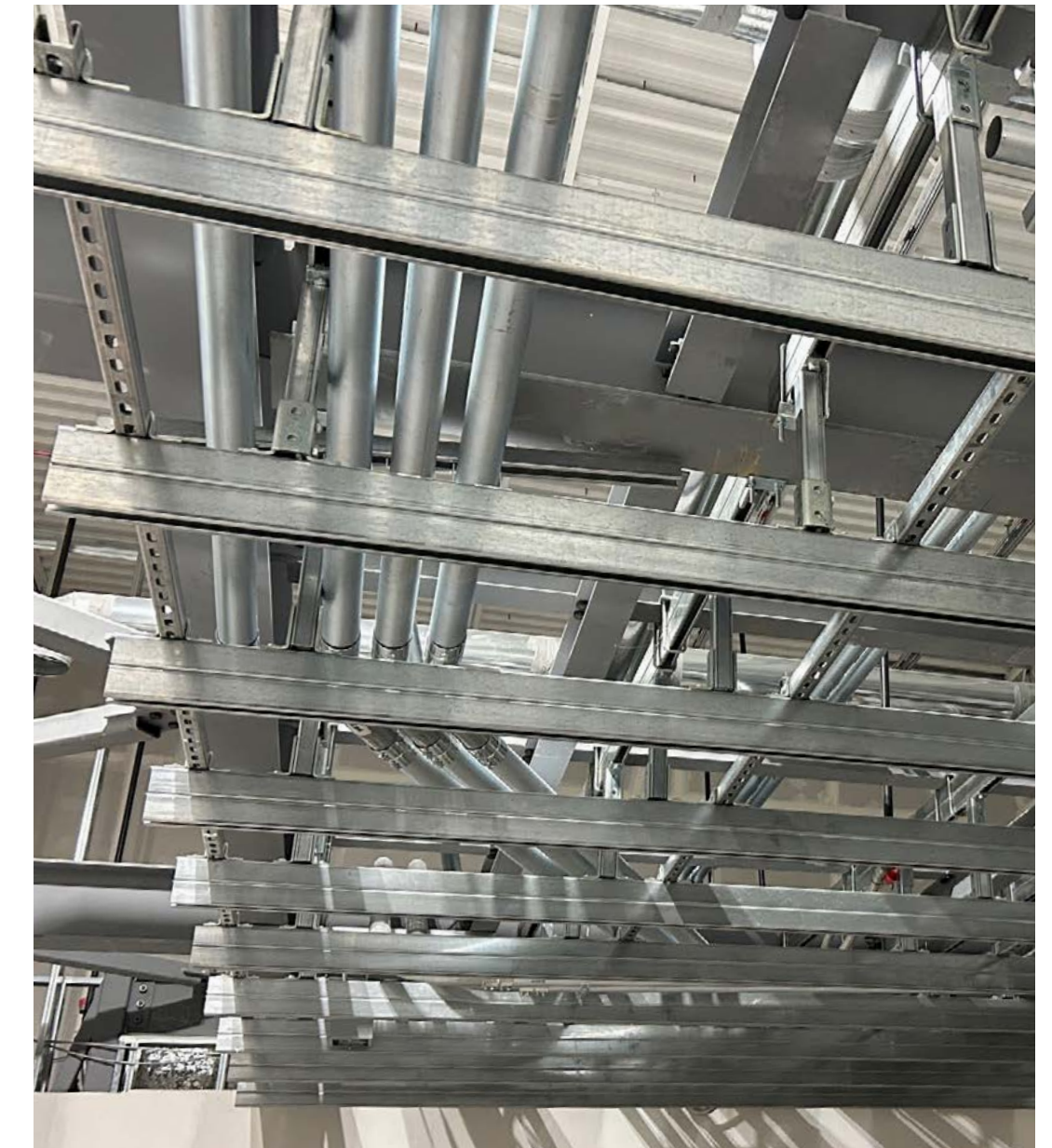
CATH LAB SUPPORTS	
	(10) Rails at 10' Long
UM PART NUMBER	DESCRIPTION
UM-CATH-CB-PARA	Concrete Beams - Rails Parallel to Beams
UM-CATH-CB-PERP	Concrete Beams - Rails Perpendicular to Beams
UM-CATH-CD-PARA	Concrete (w/Metal Deck) - Ceiling Rails Parallel to Deck
UM-CATH-CD-PERP	Concrete (w/Metal Deck) - Ceiling Rails Perpendicular to Deck
UM-CATH-SB-PARA	Steel Beams - Ceiling Rails Parallel to Beams
UM-CATH-SB-PERP	Steel Beams - Ceiling Rails Perpendicular to Beams



Cath Lab

Unistrut metal framing is uniquely suited for state-of-the-art Cath Labs, distributing loads and prevents deflection for improved image quality. The support structure is discreetly hidden above ceiling panels, attached directly to structural elements like concrete decks or steel beams. Our customized design solutions meet weight requirements and equipment support needs within your budget and project timeline.

- All-Bolted Solutions, no welding or hot works permit required
- Simple adjustments allow for current and future needs
- Modularity for installation around MEP services
- Mounts to concrete or metal beams, bar joists, and concrete decking



(3) RAIL SUPPORT	
UM PART NUMBER	DESCRIPTION
UM-3R-CB-PARA	Concrete Beams - Rails Parallel to Beams
UM-3R-CB-PERP	Concrete Beams - Rails Perpendicular to Beams
UM-3R-CD-PARA	Concrete (w/Metal Deck) - Ceiling Rails Parallel to Deck
UM-3R-CD-PERP	Concrete (w/Metal Deck) - Ceiling Rails Perpendicular to Deck
UM-3R-SB-PARA	Steel Beams - Ceiling Rails Parallel to Beams
UM-3R-SB-PERP	Steel Beams - Ceiling Rails Perpendicular to Beams
UM-3R-JST-PARA	Bar Joist - Ceiling Rails Parallel to Beams
UM-3R-JST-PERP	Bar Joist - Ceiling Rails Perpendicular to Beams



X-Ray

Unistrut Support Structures are the ideal product for supporting overhead X-Ray or Cath Lab Equipment. Unistrut's all-bolted medical equipment support structures can be designed to support anything from a 3-Rail System up to a 7-Rail System. Our X-Ray Support solutions are typically specified as "delegated design" to the contractor who will be installing the support structure. We offer structural design packages utilizing both 2D and 3D design platforms, and we can also provide P/E stamp drawings, BIM coordination, and shop drawings for any of our designs.

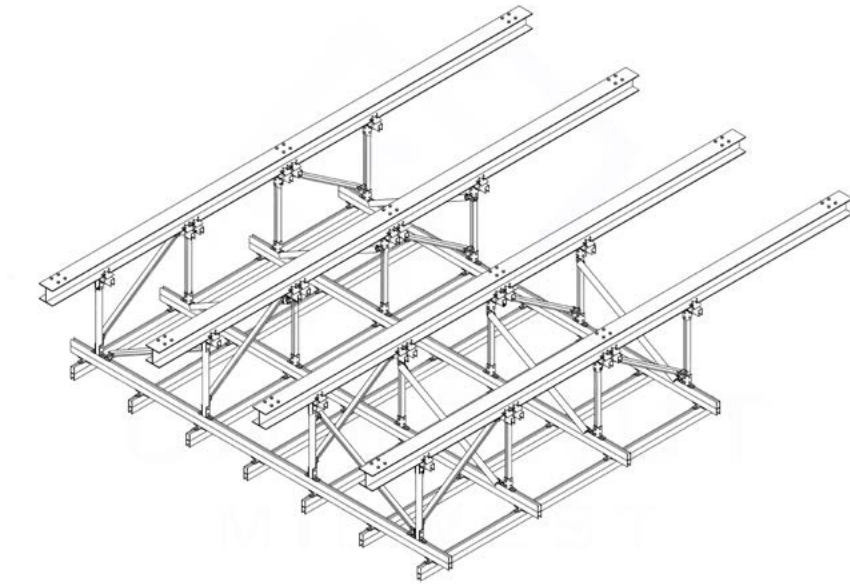
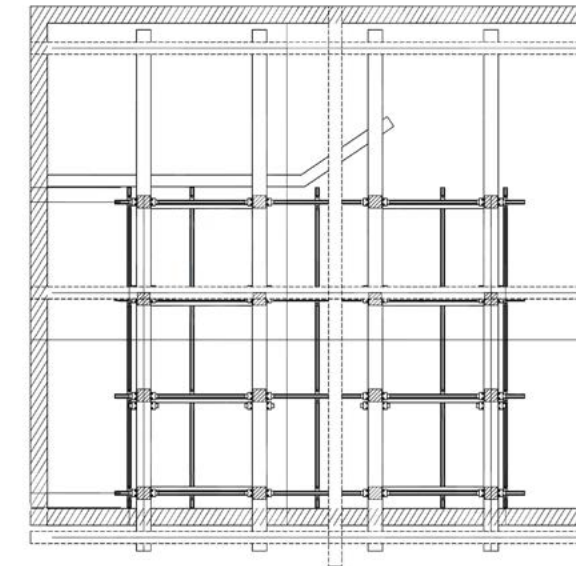
- All-Bolted Solutions, no welding or hot works permit required
- Modular steel systems are faster to assemble and provide future flexibility
- Mounts to concrete or metal beams, bar joists, and concrete decking



(4) RAIL SUPPORT	
<i>(4) Rails at 10' Long</i>	
UM PART NUMBER	DESCRIPTION
UM-4R-CB-PARA	Concrete Beams - Rails Parallel to Beams
UM-4R-CB-PERP	Concrete Beams - Rails Perpendicular to Beams
UM-4R-CD-PARA	Concrete (w/Metal Deck) - Ceiling Rails Parallel to Deck
UM-4R-CD-PERP	Concrete (w/Metal Deck) - Ceiling Rails Perpendicular to Deck
UM-4R-SB-PARA	Steel Beams - Ceiling Rails Parallel to Beams
UM-4R-SB-PERP	Steel Beams - Ceiling Rails Perpendicular to Beams
UM-4R-JST-PARA	Bar Joist - Ceiling Rails Parallel to Beams
UM-4R-JST-PERP	Bar Joist - Ceiling Rails Perpendicular to Beams



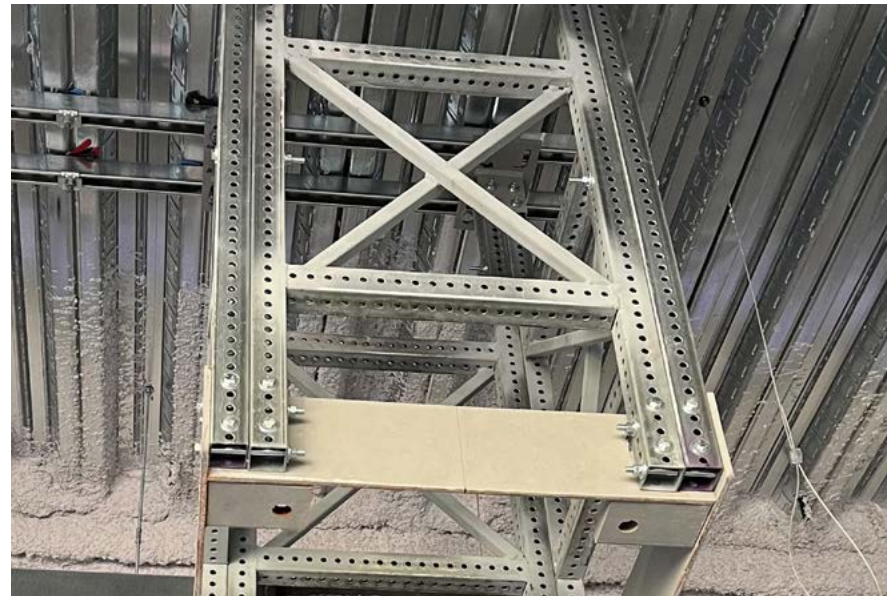
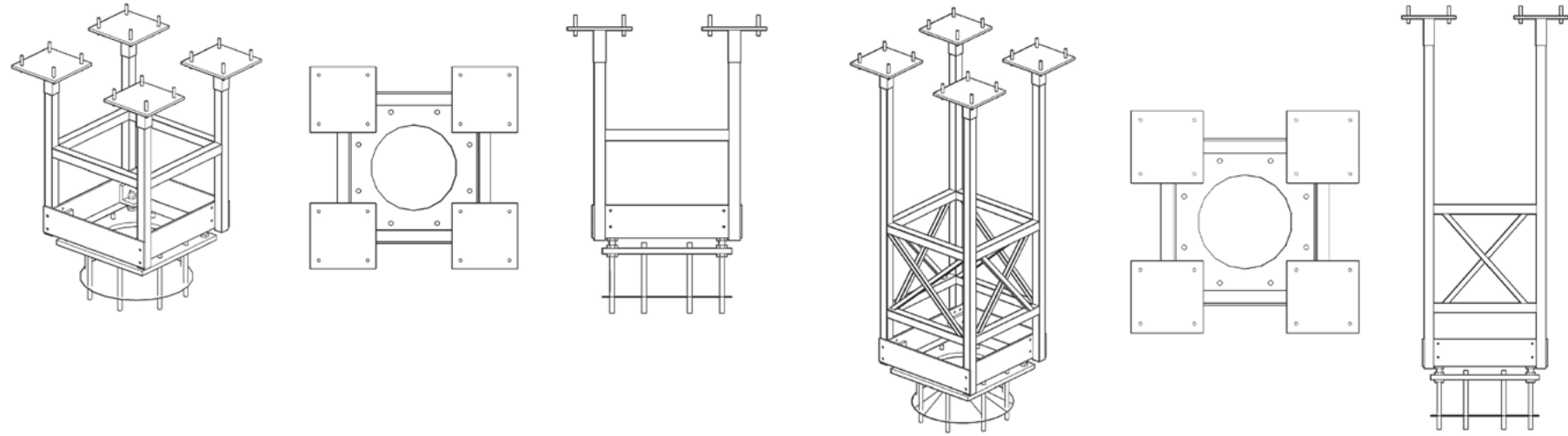
(7) RAIL SUPPORT	
<i>(7) Rails at 10' Long</i>	
UM PART NUMBER	DESCRIPTION
UM-7R-CB-PARA	Concrete Beams - Rails Parallel to Beams
UM-7R-CB-PERP	Concrete Beams - Rails Perpendicular to Beams
UM-7R-CD-PARA	Concrete (w/Metal Deck) - Ceiling Rails Parallel to Deck
UM-7R-CD-PERP	Concrete (w/Metal Deck) - Ceiling Rails Perpendicular to Deck
UM-7R-SB-PARA	Steel Beams - Ceiling Rails Parallel to Beams
UM-7R-SB-PERP	Steel Beams - Ceiling Rails Perpendicular to Beams
UM-7R-JST-PARA	Bar Joist - Ceiling Rails Parallel to Beams
UM-7R-JST-PERP	Bar Joist - Ceiling Rails Perpendicular to Beams





Unistrut Medical Support Booms

Surgical Booms require the heaviest-duty medical support. The equipment commonly supported by this category support would be anesthesia booms, surgical booms, heavy-duty surgical lights, dual arm monitor supports, med-gas columns, and more. For these cases, we can provide Sikla siFramo or welded steel supports for a more substantial support system. We can provide a full turnkey solution, including design, PE stamped drawings, prefabrication, delivery, and installation.



Prefabrication

UMS Boom support prefabrication reduces your on-site man hours, project costs, and material waste while still providing the reliable solution you expect.

UMS Boom support prefabrication begins with the Unistrut Midwest team building to your specifications in our warehouse at ground level; a safer process that doesn't interfere with other construction occurring on site. Our metal framing systems require no welded steel connections, saving assembly time, removing the need for hot work permits, and allowing for faster installation. The systems can be modified in the field to accommodate changes in equipment or room layout.





Unistrut Multi-Trade Racks

Unistrut MTR's are designed to be a modular system containing piping, duct work, and cable trays, prefabricated and constructed off-site, which allows a reduction in the overall construction schedule. Not only are they faster than traditional construction, but safer as well compared to overhead stick installations.

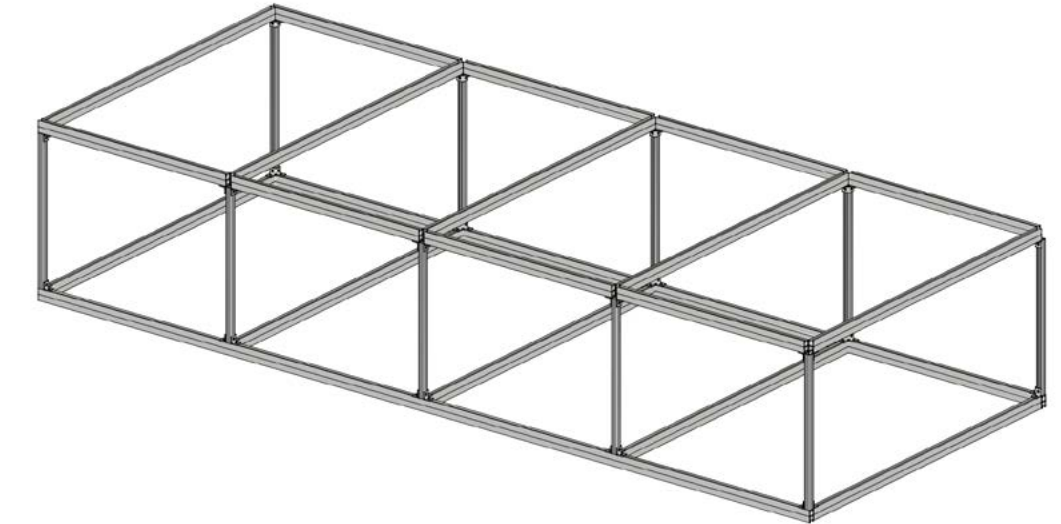
No welding or hot works permits are required, and the accommodating rack system allows for simple adjustments after the installation. These MTR's are delivered to the job site ready to be lifted in place and installed, saving valuable on-site man hours.

UNISTRUT MULTI-TRADE RACK PART NUMBER LIST

UM PART NUMBER	SUPPORT TYPE	DESCRIPTION
UMTR-1-60	4X4 P1000T	4'x4' - P1000T Rack
UMTR-1-80	4X4 P1000T	4'x4' - P1000T Rack
UMTR-2-60	8X4 P1000T	8'W x 4'T - P1000T Rack
UMTR-2-80	8X4 P1000T	8'W x 4'T - P1000T Rack
UMTR-3-60	8X4 P1001	8'W x 4'T - P1001 Rack
UMTR-3-80	8X4 P1001	8'W x 4'T - P1001 Rack
UMTR-4-60	8X4 P5001U	8'W x 4'T - P5001U/P1001L Rack
UMTR-4-80	8X4 P5001U	8'W x 4'T - P5001U/P1001L Rack
SMTR-1-60	8X4 SIKLA/UNISTRUT	8'W x 4'T - F100 Cage with P1001
SMTR-1-80	8X4 SIKLA/UNISTRUT	8'W x 4'T - F100 Cage with P1002

**All racks are 20' in length, with a maximum length of 38' utilizing Sikla materials.*

As construction demands grow and timelines shorten, contractors need to think outside the box to deliver on schedule. Prefabricated Multi-Trade Rack (MTR) builds allow for construction of key mechanical components offsite, thereby shortening installation onsite to a matter of hours.



Modular MTRs can be built in half a day and fit with required electrical, HVAC, and/or plumbing. This is done in parallel to primary construction, so MTRs can be installed as soon as the building is ready, with many installations taking only an afternoon. Our modular steel systems can be assembled 300-500% faster than traditional welded structures.



Sikla

Sikla siFramo is a weldless, configurable, reusable metal framing system that can easily take the place of clunky welded structural steel in your facility. The bolted system allows for quick modifications, endless design flexibility, and minimal installation time. Our modular steel systems can be assembled 300-500% faster than traditional welded structures, often in just a few hours as opposed to days or weeks. Our solutions are fully customizable, so if your needs vary, we can design to fit your project.

Multi-Trade Racks

Sikla Multi-Trade Racks utilize one structure to support piping, conduit, cable tray, or other building services. These racks can be built between 20' to 38' long to match the project requirements and minimize the number of lifts. Our standard designs are based on an 8' width and up to a 5' depth, and the typical racks are designed to support up to 200lbs per foot corridor service load.



Pipe Racks

Sikla Pipe Racks are used to support large pipes in ground mounted or suspended applications. These racks can be built in lengths of 20' to 38' long, and we can offer fully assembled modules, flat packed kits, or cut-to-size materials.

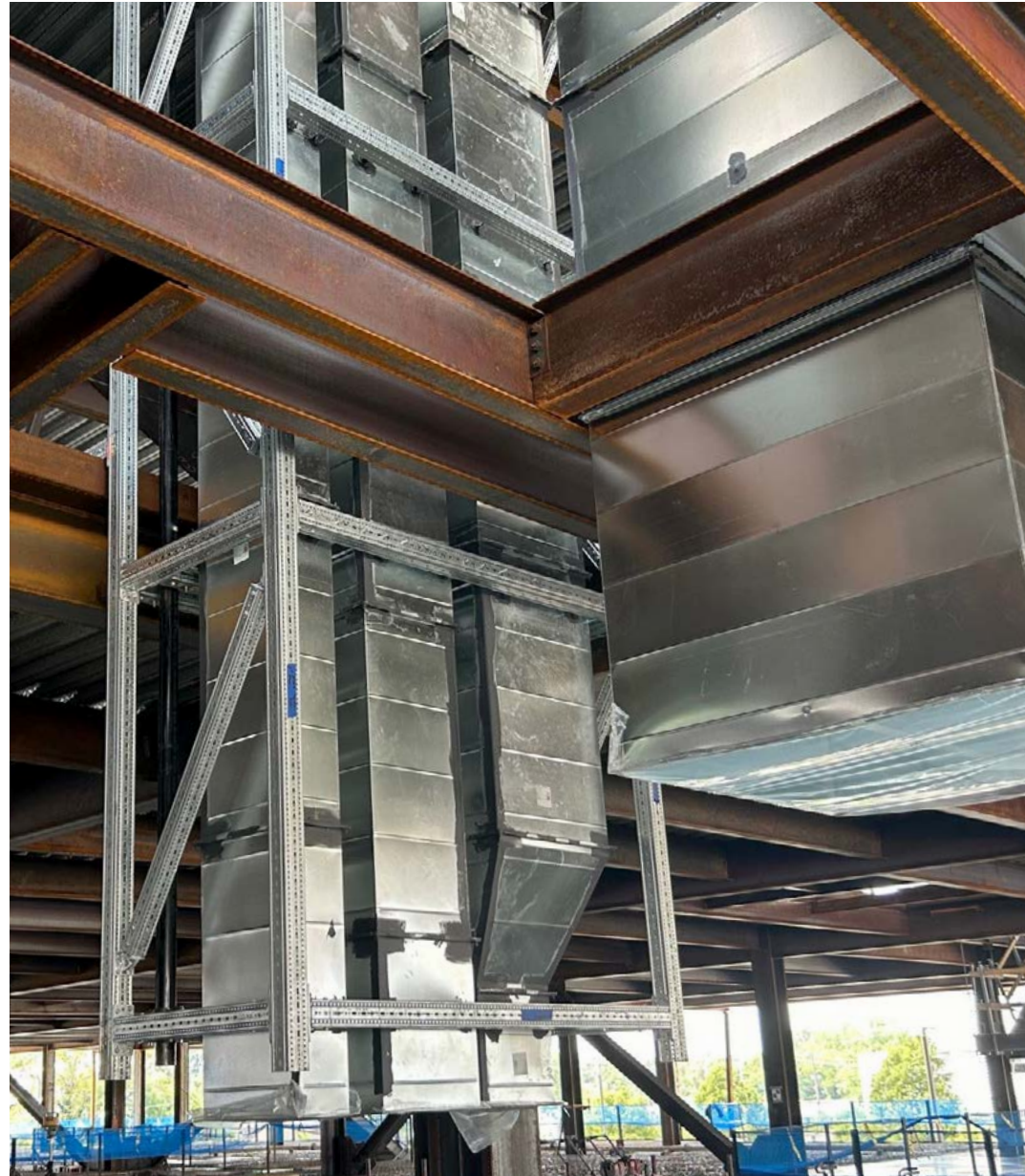
We have dedicated facilities to maximize our capacity to tackle a project of any size, saving you time, maximizing safety, and increasing labor savings.



Riser Racks

Sikla Riser Racks are designed to load piping, duct, and other building service work off-site. Assembled at ground level, construction is safer than overhead stick-built installations.

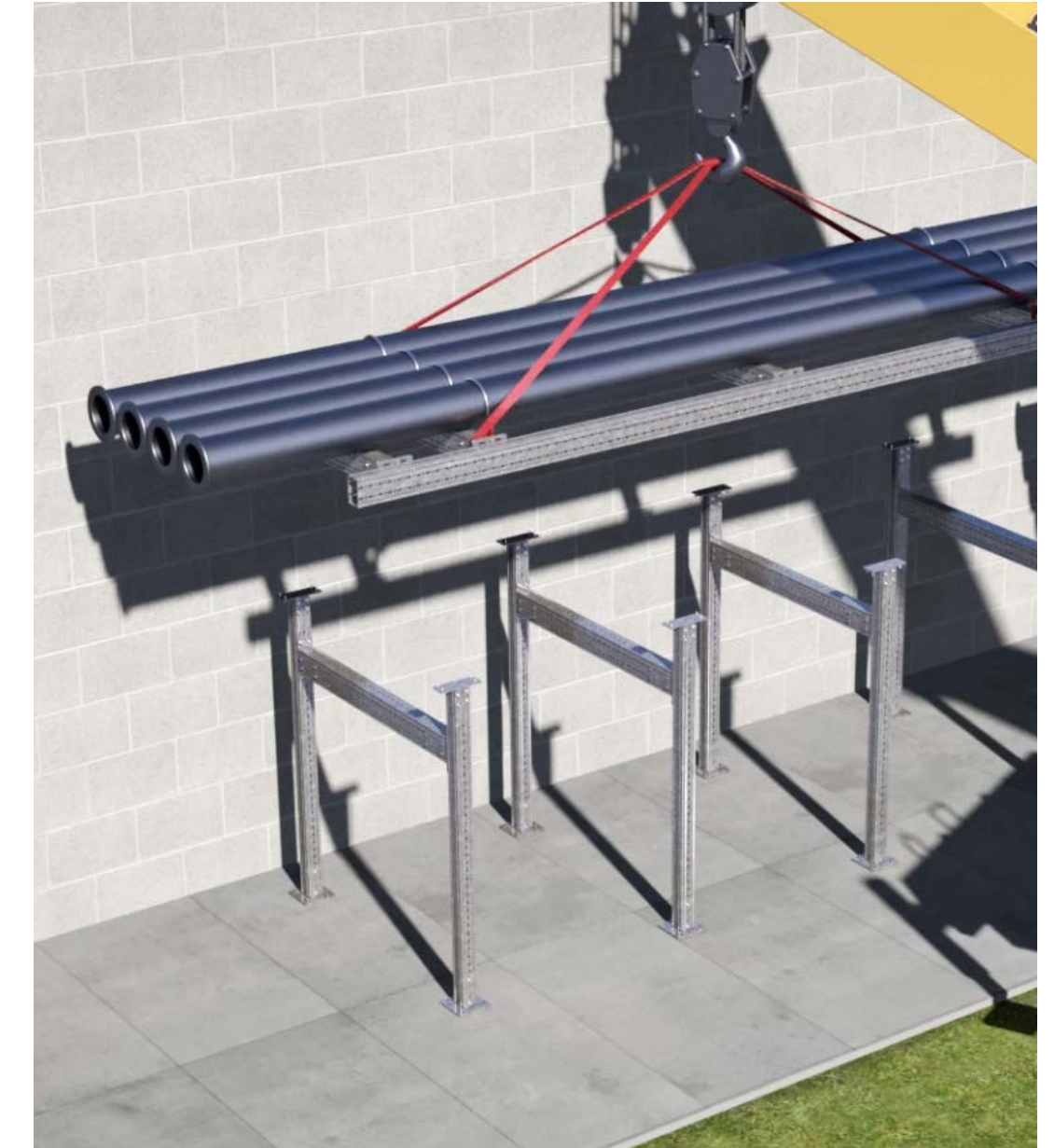
These racks can be built between 20' to 38' long and are delivered to the job site. All lifting and transport forces are considered in our design calculations.



T&H Supports

Sikla Prefabricated T Supports are an ideal solution for exterior pipe or cable tray supports. The high-strength beam sections are significantly lighter than traditional HSS Welded Frames.

Sikla Prefabricated H Supports can be used to support pipe racks when there is no overhead structure or insufficient structure to suspend the racks.





Roofwalks, Crossovers, and Catwalks

The construction process often means juggling contractors and competing timelines while trying to avoid miscommunications and errors that can push back installation and drive up costs. Unistrut Midwest is an all-in-one partner with decades of experience in designing, sourcing, prefabricating, and installing support and access systems that make efficient use of all available space.

Roofwalks

Unistrut Roofwalks help provide a safe and convenient walkway to enhance access to rooftop equipment by maintenance or service professionals. Unistrut Midwest designs and engineers custom roof walkway platforms to work on nearly any roof type or pitch.



Crossovers

Unistrut crossover stairs and conveyor crossover platforms provide a direct, safe access route over conveyors, piping, and ductwork so that service professionals can reach that equipment. The crossovers and work platforms are customizable to adapt to any field condition, and the Unistrut Midwest team designs solutions with your operations in mind.





Catwalks

Unistrut catwalks and catwalk systems deposit, transport, and remove your goods, inventory, and machinery from areas that are inaccessible from floor level. Unistrut industrial catwalk systems, designed and installed by Unistrut Midwest, are unique from typical structural steel walkways since they are designed with all bolted connections that eliminate the need for welding on almost all projects. The bolted connections allow the system to be modified, expanded, or altered to adapt to future requirements.





Concrete Inserts

Our Unistrut Concrete Inserts are initially installed during a building's construction and are an important step in the planning process. Unistrut concrete inserts are manufactured from standard Unistrut channel and can be used in pre-cast, pre-stressed, and poured-in-place floors, walls, or ceilings for the support of piping, conduit, cable, and other equipment. Much like standard Unistrut channel, channel nuts can be positioned anywhere along the length of a concrete insert, providing a means of attaching fittings or rods where required. Unistrut concrete inserts can be supplied in Pre-Galvanized, Hot-Dip Galvanized, and Stainless-Steel finishes.

Streamlined, efficient construction starts here.

OUR SERVICES

- **Engineering and Design**

We offer structural rack design packages utilizing both 2D and 3D design platforms. We can provide P/E Stamp Drawings, BIM Coordination, and Shop Drawings for any of our designs.

- **Prefabrication Capabilities**

We have dedicated facilities and teams to maximize our capacity to tackle a project of any size, saving you time, maximizing safety, and labor savings.

- **Modular Steel Offerings**

We use innovative modular steel systems such as Sikla or Unistrut to create modules or rack systems with all-bolted connections. Our modular steel systems are faster to assemble and provide future flexibility.

- **Supply and Inventory**

We carry the largest on-hand inventory of Sikla and Unistrut products in the US. Our large inventory allows us to keep projects on schedule without full reliance on our manufacturer's supply chain.

We help our clients think outside the box to find the best solutions to their challenges. By encouraging innovative thinking, we set ourselves apart as not just a good partner, but a great one. Our clients' typical challenges are things like creating necessary structures in a tight timeline, with a limited workforce, or with various other restrictions.

If we simply presented a "one size fits all" system or a list of our services, we would be doing our clients a disservice. Instead, we listen to their pain points and use our industry knowledge to help our clients rethink their problem and, therefore, the solution.

Contact us today

Cincinnati
1275 Hillsmith Drive
Cincinnati, OH 45215

Columbus
1973 Corvair Avenue
Columbus, OH 43207

Detroit
4045 Second Street
Wayne, MI 48184

Indianapolis
2125 S. Keystone
Indianapolis, IN 46203

1-800-586-4787

1201 Hillsmith Drive
Cincinnati, OH 45215





Cincinnati Headquarters
1201 Hillsmith Drive
Cincinnati, OH 45215